

SAN LUIS POTOSÍ

## ---RED FEDERAL LIBRE---

1 Carbonera - T. C. (Ent. Morelos - Saltillo)	MEX-062
2 Cd. Valles - Cd. Victoria	MEX-085
3 Cd. Valles - San Luis Potosí	MEX-070
4 Cd. Valles - Tampico	MEX-070
5 El Clarín - Agua Buena	MEX-070
6 Ent. Ahualulco - Ent. La Bonita	MEX-063
7 Ent. de Zaragoza - San Felipe	MEX-037
8 Ent. El Huizache - Antigua Morelos	MEX-080
9 Ent. Tula - Cd. Victoria	MEX-101
10 Jalpan de Serra - Rioverde	MEX-069
11 Libramiento de Cd. Valles	MEX-070
12 Libramiento de Villa de Reyes	MEX-037
13 Libramiento de Villa de Reyes (Poniente)	MEX-037
14 Libramiento Villa de Arriaga	MEX-080
15 Matehuala - Ent. Puerto México	MEX-057
16 Portezuelo - Cd. Valles	MEX-085
17 Querétaro - San Luis Potosí	MEX-057
18 Ramal a Aeropuerto de S. L. P.	MEX-057
19 Ramal a Ojo de Agua	MEX-062
20 Ramal a Rayón	MEX-070
21 San Juan del Río - Xilitla	MEX-120
22 San Luis Potosí - Ent. Arcinas	MEX-049
23 San Luis Potosí - Lagos de Moreno	MEX-070-080
24 San Luis Potosí - Matehuala	MEX-057
25 T. C. (Ent. El Huizache- Ant. Morelos)-El Salto	MEX-080
26 T. C. (Qro - S.L.P.) - Tierra Nueva	MEX-057
27 T. C. (S.L.P. - Matehuala) - Villa Hidalgo	MEX-057
28 Tamazunchale - San Felipe Orizatlán	MEX-085

## ---RED FEDERAL DE CUOTA---

29 Lagos de Moreno - Villa de Arriaga (Cuota)	MEX-080D
30 Libramiento de Matehuala (Cuota)	MEX-057D
31 Libramiento Norponiente de San Luis Potosí (Cuota)	MEX-057D
32 Libramiento Oriente de San Luis Potosí (Cuota)	MEX-057D
33 Rayón - Ent. Tamuín (Cuota)	MEX-070D

## ---RED ESTATAL LIBRE---

34 Charcas - Villa Santo Domingo	SLP-017
35 Ébano - Estación Manuel	SLP-TAM
36 Matehuala - La Paz	SLP-020
37 Matehuala - La Poza	SLP-029-NL-061
38 Periférico de San Luis Potosí	SLP-032
39 Ramal a Cerritos	SLP-007
40 Ramal a Pozo de Acuña	SLP-009
41 Rayón - Arroyo Seco	SLP-011
42 Santo Domingo - Cerro Gordo	SLP-022
43 Tamuín - Estación F.F.C.C. Tamuín	SLP-040
44 Tamuín - Xolol	SLP-014

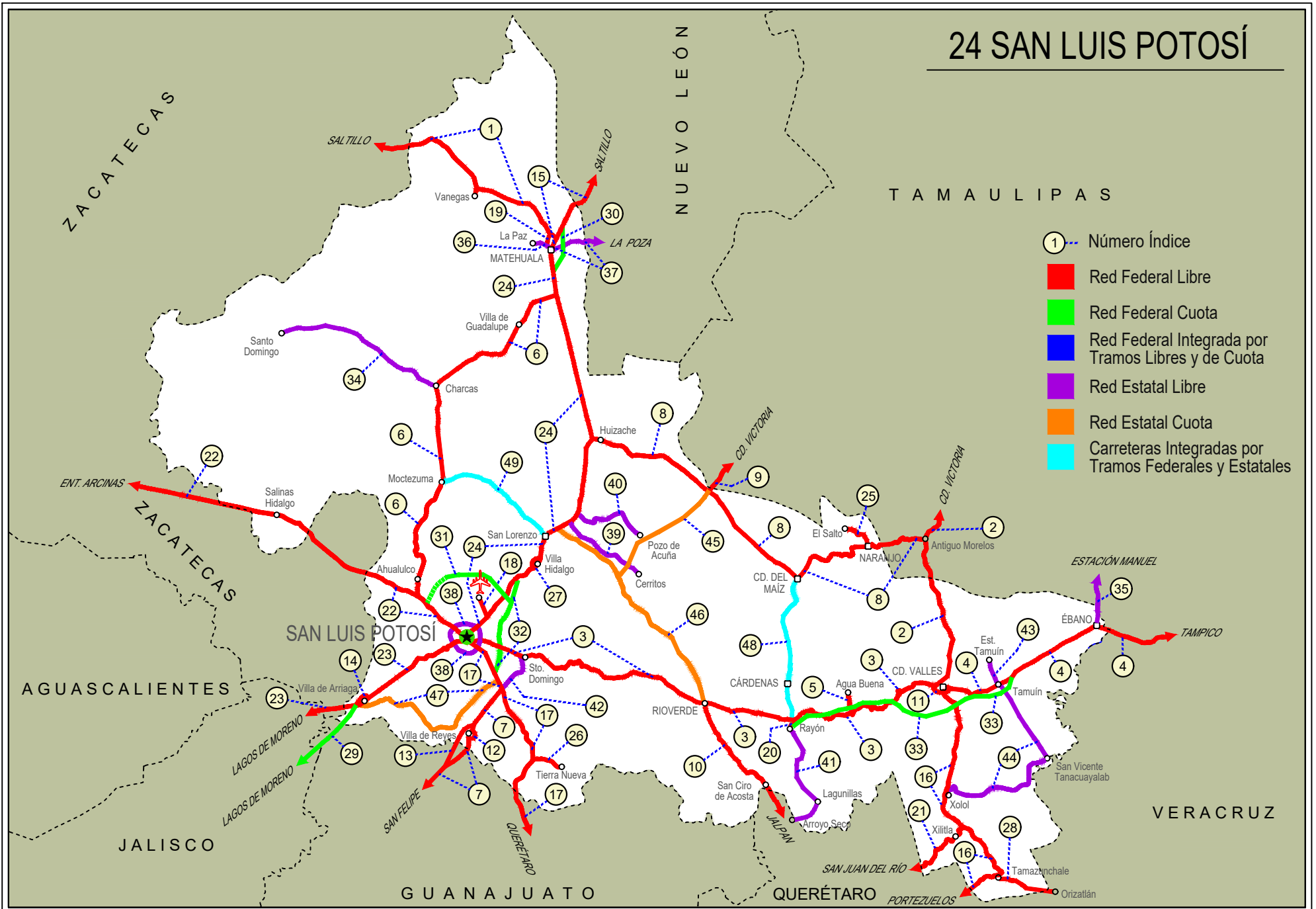
## ---RED ESTATAL DE CUOTA---

45 Cerritos - Ent. Tula (Cuota)	SLP-075D
46 Rioverde - Cerritos (Cuota)	SLP-D
47 San Luis Potosí - Villa de Arriaga (Cuota)	SLP-D

## ---CARRETERAS INTEGRADAS POR TRAMOS FEDERALES Y ESTATALES---

48 Rayón - Cd. del Maíz	MEX-070-SLP-005
49 San Lorenzo - Moctezuma	MEX-063-SLP-012

# 24 SAN LUIS POTOSÍ





SAN LUIS POTOSÍ

1 CARR: Carbonera - T. C. (Ent. Morelos - Saltillo)

CLAVE: 00218

RUTA: MEX-062

AÑO: 2025

LUGAR	ESTACION				CLASIFICACION VEHICULAR EN PORCIENTO										COORDENADAS					
	KM	TE	SC	TDPA	M	A	B	C2	C3	T3S2	T3S3	T3S2R4	OTROS	A	B	C	K'	D	LATITUD	LONGITUD
Carbonera	0.00	3	0	3977	7.6	73.3	1.6	11.6	2.2	1.7	0.7	1.0	0.3	80.9	1.6	17.5	0.080	0.502	23.702617	-100.626167
Cedral	18.00	1	0	6052	9.0	81.8	1.4	3.8	1.1	1.1	0.6	0.8	0.4	90.8	1.4	7.8	0.075	0.530	23.794157	-100.698358
Cedral	18.00	3	0	3979	11.5	70.3	2.3	10.6	1.7	1.6	0.9	0.8	0.3	81.8	2.3	15.9	0.091	0.515	23.827893	-100.735207
Lim. Edos. Term. S. L. P. Ppia. Zac.	79.20																			
T. C. Ent. Morelos - Saltillo	112.00	1	0	1693	2.4	73.3	1.8	16.9	2.5	2.0	0.4	0.6	0.1	75.7	1.8	22.5	0.083	0.553	24.157849	-101.494478

2 CARR: Cd. Valles - Cd. Victoria

CLAVE: 00509

RUTA: MEX-085

AÑO: 2025

LUGAR	ESTACION				CLASIFICACION VEHICULAR EN PORCIENTO										COORDENADAS					
	KM	TE	SC	TDPA	M	A	B	C2	C3	T3S2	T3S3	T3S2R4	OTROS	A	B	C	K'	D	LATITUD	LONGITUD
Cd. Valles	0.00	3	0	11799	5.0	86.9	1.4	4.1	0.6	1.0	0.4	0.5	0.1	91.9	1.4	6.7	0.074	0.623	22.007350	-99.004526
Lim. Edos. Term. S. L. P. Ppia. Tamps.	50.40																			
Antiguo Morelos	66.90	1	0	3240	9.1	79.5	3.5	1.8	1.5	1.9	0.6	1.8	0.3	88.6	3.5	7.9	0.072	0.573	22.550237	-99.078465
Antiguo Morelos	66.90	3	0	3849	7.9	76.5	4.5	2.6	2.0	2.7	1.4	1.7	0.7	84.4	4.5	11.1	0.083	0.519	22.565218	-99.077175
Cd. Mante	98.00	1	0	9644	10.1	79.2	1.7	3.3	1.9	1.4	0.9	1.0	0.5	89.3	1.7	9.0	0.082	0.519	22.712073	-98.988758
T. Izq. Ocampo	110.00	3	0	4728	15.5	75.8	3.4	2.4	1.4	0.7	0.3	0.4	0.1	91.3	3.4	5.3	0.074	0.571	22.838756	-99.024365
T. Izq. Gómez Farías	132.84	3	0	2077	13.2	74.3	3.8	6.4	0.9	1.0	0.1	0.2	0.1	87.5	3.8	8.7	0.099	0.507	23.030333	-99.093812
T. Izq. Llera de Canales	170.00	3	0	4438	2.1	89.4	1.6	4.6	0.7	0.6	0.5	0.4	0.1	91.5	1.6	6.9	0.090	0.616	23.310160	-99.018473
T. Der. González	172.50	3	0	2948	3.0	81.2	4.1	6.2	1.5	1.8	1.2	1.0	0.0	84.2	4.1	11.7	0.107	0.687	23.319616	-98.998095
Cd. Victoria	232.00	1	0	2723	2.6	83.6	4.3	5.4	1.9	1.3	0.7	0.1	0.1	86.2	4.3	9.5	0.105	0.614	23.659899	-99.096580

3 CARR: Cd. Valles - San Luis Potosí

CLAVE: 24135

RUTA: MEX-070

AÑO: 2025

LUGAR	ESTACION				CLASIFICACION VEHICULAR EN PORCIENTO										COORDENADAS					
	KM	TE	SC	TDPA	M	A	B	C2	C3	T3S2	T3S3	T3S2R4	OTROS	A	B	C	K'	D	LATITUD	LONGITUD
Cd. Valles	0.00	3	1	4158	6.8	80.8	2.0	6.2	1.5	1.2	0.8	0.6	0.1	87.6	2.0	10.4	0.089	0.789	21.990107	-99.045038
Cd. Valles	0.00	3	2	4683	6.1	81.1	2.3	5.8	1.7	1.4	0.8	0.7	0.1	87.2	2.3	10.5	0.112	0.789	21.990005	-99.045070
X. C. Rayón - Ent. Tamuín (Cuota)	11.59	1	1	2787	5.5	82.4	4.0	3.2	1.7	2.2	0.5	0.5	0.0	87.9	4.0	8.1	0.081	0.510	22.002724	-99.100913
X. C. Rayón - Ent. Tamuín (Cuota)	11.59	1	2	3072	5.9	81.8	4.0	3.2	1.7	2.0	0.5	0.8	0.1	87.7	4.0	8.3	0.078	0.510	22.002631	-99.100915
T. Der. Damián Carmona	31.25	3	0	2360	10.6	82.0	0.8	2.7	2.2	1.3	0.4	0.0	0.0	92.6	0.8	6.6	0.091	0.542	21.924266	-99.234975
T. Der. Canoas	75.40	1	0	1839	6.3	81.6	1.7	5.4	1.9	2.0	0.9	0.2	0.0	87.9	1.7	10.4	0.082	0.536	21.873209	-99.495217
X. C. Cárdenas - Rayón	93.00	1	0	2926	4.4	73.4	1.9	12.8	2.5	3.2	1.5	0.3	0.0	77.8	1.9	20.3	0.087	0.539	21.852863	-99.625478
X. C. Cárdenas - Rayón	93.00	3	0	7424	3.9	73.6	5.3	3.8	2.7	5.2	1.8	3.0	0.7	77.5	5.3	17.2	0.095	0.501	21.859386	-99.652941
T. Der. Cerrito de la Cruz	104.30	3	0	8363	2.8	76.2	3.9	4.6	2.1	4.6	2.3	2.6	0.9	79.0	3.9	17.1	0.078	0.525	21.881639	-99.725531
T. Der. Santa Rita	118.00	3	0	7585	4.7	74.8	4.5	3.9	2.1	4.3	2.0	2.8	0.9	79.5	4.5	16.0	0.089	0.512	21.897869	-99.853497

SAN LUIS POTOSÍ

3 CARR: Cd. Valles - San Luis Potosí

CLAVE: 24135

RUTA: MEX-070

AÑO: 2025

LUGAR	ESTACION				CLASIFICACION VEHICULAR EN PORCIENTO										COORDENADAS					
	KM	TE	SC	TDPA	M	A	B	C2	C3	T3S2	T3S3	T3S2R4	OTROS	A	B	C	K'	D	LATITUD	LONGITUD
Río Verde	133.76	1	1	12484	9.0	80.2	1.3	7.0	0.9	0.7	0.4	0.3	0.2	89.2	1.3	9.5	0.088	0.515	21.922664	-99.983883
Río Verde	133.76	1	2	12102	9.2	80.3	1.5	6.8	0.7	0.8	0.3	0.2	0.2	89.5	1.5	9.0	0.083	0.515	21.922584	-99.984370
Río Verde	133.76	3	1	9428	8.6	82.9	0.7	5.8	0.9	0.2	0.4	0.3	0.2	91.5	0.7	7.8	0.088	0.532	21.937865	-100.031917
Río Verde	133.76	3	2	9332	8.8	81.9	0.8	6.0	1.1	0.5	0.4	0.2	0.3	90.7	0.8	8.5	0.082	0.532	21.937751	-100.031991
T. Der. La Reformita	145.90	1	0	6883	5.3	82.3	2.1	6.2	2.1	1.1	0.5	0.3	0.1	87.6	2.1	10.3	0.078	0.546	21.963717	-100.090132
T. Der. La Reformita	145.90	3	0	6196	5.1	82.6	1.9	6.2	2.1	1.4	0.4	0.2	0.1	87.7	1.9	10.4	0.088	0.628	21.972493	-100.101436
T. Izq. La Tapona	157.76	1	0	4045	5.5	81.2	1.8	6.4	1.9	1.6	1.0	0.5	0.1	86.7	1.8	11.5	0.083	0.509	22.020833	-100.185918
T. Izq. La Tapona	157.76	3	0	4035	6.0	81.4	2.0	5.4	2.3	1.8	0.9	0.2	0.0	87.4	2.0	10.6	0.080	0.565	22.021734	-100.192987
T. Der. Guaxcama	161.04	3	0	3297	5.4	80.7	1.9	6.5	2.2	1.8	0.7	0.6	0.2	86.1	1.9	12.0	0.091	0.588	22.037022	-100.279262
San Antonio	180.70	1	0	3487	5.1	81.9	2.0	5.5	2.3	1.8	1.1	0.2	0.1	87.0	2.0	11.0	0.097	0.568	22.017430	-100.365875
T. Izq. Puente Prieto	181.93	3	0	3796	6.7	78.5	2.1	7.0	2.4	1.9	1.0	0.3	0.1	85.2	2.1	12.7	0.091	0.568	22.018559	-100.396069
San Nicolás Tolentino	191.00	1	0	3903	5.5	82.3	2.3	4.7	2.4	1.7	0.8	0.3	0.0	87.8	2.3	9.9	0.095	0.570	22.049095	-100.447750
T. Der. San Martín de Abajo	199.60	1	0	3176	4.2	82.0	2.2	6.8	2.5	1.7	0.3	0.2	0.1	86.2	2.2	11.6	0.111	0.565	22.064594	-100.489963
T. Der. San Martín de Abajo	199.60	3	0	3243	4.0	80.1	2.7	6.8	2.2	2.0	1.3	0.8	0.1	84.1	2.7	13.2	0.109	0.631	22.078826	-100.507428
T. Izq. Zaragoza	239.50	1	0	5948	4.7	80.9	2.0	6.7	1.8	2.2	0.9	0.6	0.2	85.6	2.0	12.4	0.105	0.522	22.098626	-100.742792
T. Izq. Zaragoza	239.50	3	0	8297	5.5	78.9	1.9	7.9	1.5	1.7	1.2	0.9	0.5	84.4	1.9	13.7	0.079	0.537	22.102154	-100.752670
X. Lib. Ote. de San Luis Potosí	255.00	1	0	10669	6.9	79.1	2.1	6.5	1.5	1.9	1.2	0.5	0.3	86.0	2.1	11.9	0.083	0.579	22.121806	-100.807657
X. Periférico de San Luis Potosí	257.44	1	1	26623	4.2	88.4	1.1	3.2	1.4	1.0	0.4	0.2	0.1	92.6	1.1	6.3	0.088	0.502	22.148689	-100.882685
X. Periférico de San Luis Potosí	257.44	1	2	26665	4.2	88.6	0.9	3.5	1.1	0.8	0.3	0.4	0.2	92.8	0.9	6.3	0.088	0.502	22.148579	-100.882797
San Luis Potosí	261.94																			

4 CARR: Cd. Valles - Tampico

CLAVE: 00138

RUTA: MEX-070

AÑO: 2025

LUGAR	ESTACION				CLASIFICACION VEHICULAR EN PORCIENTO										COORDENADAS					
	KM	TE	SC	TDPA	M	A	B	C2	C3	T3S2	T3S3	T3S2R4	OTROS	A	B	C	K'	D	LATITUD	LONGITUD
Cd. Valles	0.00	3	0	8224	4.6	80.0	1.9	6.5	3.1	1.9	0.8	1.0	0.2	84.6	1.9	13.5	0.086	0.623	21.976013	-98.958726
T. Der. Santa Elena	15.25	3	0	5519	4.2	81.3	2.1	4.8	3.4	1.8	1.2	1.0	0.2	85.5	2.1	12.4	0.085	0.662	21.961381	-98.877630
Tamuín	29.60	1	0	6417	3.5	73.7	2.3	10.1	2.6	4.3	1.8	1.1	0.6	77.2	2.3	20.5	0.091	0.680	21.997100	-98.781241
T. C. Rayón - Ent. Tamuín (Cuota)	34.40	1	0	4789	11.2	72.3	2.7	4.0	3.3	2.8	1.3	2.0	0.4	83.5	2.7	13.8	0.078	0.515	22.002356	-98.745522
T. C. Rayón - Ent. Tamuín (Cuota)	34.40	3	1	3206	7.5	70.8	5.4	3.0	2.0	4.9	1.9	3.6	0.9	78.3	5.4	16.3	0.081	0.502	22.010550	-98.729831
T. C. Rayón - Ent. Tamuín (Cuota)	34.40	3	2	3261	7.6	71.0	5.2	3.1	2.1	4.4	1.9	3.7	1.0	78.6	5.2	16.2	0.079	0.502	22.010608	-98.729933
Ébano	79.00	1	0	12147	8.8	72.0	2.2	3.4	3.1	4.8	1.9	3.4	0.4	80.8	2.2	17.0	0.070	0.505	22.214256	-98.391331
Ébano	79.00	3	0	6407	7.3	64.8	5.4	4.7	2.9	5.4	2.4	6.1	1.0	72.1	5.4	22.5	0.073	0.528	22.211622	-98.360211
Lim. Edos. Term. S. L. P. Ppia. Ver.	83.57																			
T. Der. Pánuco	103.00	1	0	8072	4.5	75.6	2.9	5.0	2.4	3.9	2.2	2.7	0.8	80.1	2.9	17.0	0.072	0.503	22.155739	-98.155117

SAN LUIS POTOSÍ

4 CARR: Cd. Valles - Tampico

CLAVE: 00138

RUTA: MEX-070

AÑO: 2025

LUGAR	ESTACION				CLASIFICACION VEHICULAR EN PORCIENTO										COORDENADAS					
	KM	TE	SC	TDPA	M	A	B	C2	C3	T3S2	T3S3	T3S2R4	OTROS	A	B	C	K'	D	LATITUD	LONGITUD
T. Der. Pánuco	103.00	3	0	10893	6.9	72.6	2.9	4.2	2.6	3.7	1.7	4.5	0.9	79.5	2.9	17.6	0.084	0.500	22.159161	-98.148580
T. C. Anáhuac - El Prieto	128.40	1	1	6262	4.8	76.1	3.5	4.2	1.7	3.8	1.7	3.3	0.9	80.9	3.5	15.6	0.079	0.575	22.213459	-97.953243
T. C. Anáhuac - El Prieto	128.40	1	2	6051	4.8	76.2	3.5	4.2	1.8	3.7	1.7	3.2	0.9	81.0	3.5	15.5	0.083	0.575	22.213543	-97.953256
T. C. Anáhuac - El Prieto	128.40	3	1	9401	5.3	71.2	3.4	4.7	2.0	6.5	2.2	3.8	0.9	76.5	3.4	20.1	0.072	0.575	22.216402	-97.940722
T. C. Anáhuac - El Prieto	128.40	3	2	8098	5.5	70.3	4.2	4.4	2.1	6.4	2.3	3.9	0.9	75.8	4.2	20.0	0.073	0.575	22.216531	-97.940689
Lim. Edos. Term. Ver. Ppia. Tamps.	133.81																			
T. C. Libramiento Poniente de Tampico (Cuota)	134.41																			
Tampico	138.00	1	1	12147	6.6	69.6	2.7	7.5	2.3	4.9	1.9	3.6	0.9	76.2	2.7	21.1	0.076	0.540	22.226827	-97.894229
Tampico	138.00	1	2	11297	6.7	70.0	2.7	7.4	2.2	4.8	1.8	3.5	0.9	76.7	2.7	20.6	0.079	0.540	22.226923	-97.894255

5 CARR: El Clarín - Agua Buena

CLAVE: 24283

RUTA: MEX-070

AÑO: 2025

LUGAR	ESTACION				CLASIFICACION VEHICULAR EN PORCIENTO										COORDENADAS					
	KM	TE	SC	TDPA	M	A	B	C2	C3	T3S2	T3S3	T3S2R4	OTROS	A	B	C	K'	D	LATITUD	LONGITUD
T. C. Cd. Valles - San Luis Potosí	0.00	3	0	1289	22.3	72.9	1.8	2.3	0.5	0.1	0.0	0.1	0.0	95.2	1.8	3.0	0.090	0.534	21.892168	-99.382499
Agua Buena	11.23	1	0	4882	10.6	75.1	2.6	8.0	1.0	2.0	0.1	0.6	0.0	85.7	2.6	11.7	0.082	0.531	21.951810	-99.391012

6 CARR: Ent. Aqualulco - Ent. La Bonita

CLAVE: 24258

RUTA: MEX-063

AÑO: 2025

LUGAR	ESTACION				CLASIFICACION VEHICULAR EN PORCIENTO										COORDENADAS					
	KM	TE	SC	TDPA	M	A	B	C2	C3	T3S2	T3S3	T3S2R4	OTROS	A	B	C	K'	D	LATITUD	LONGITUD
T. C. San Luis Potosí - Ent. Arcinas	0.00	3	0	5354	5.3	85.5	2.2	4.0	1.1	0.9	0.5	0.4	0.1	90.8	2.2	7.0	0.117	0.583	22.322163	-101.165320
Ahualulco	11.00	3	0	5642	6.8	82.1	1.4	6.2	1.6	1.1	0.6	0.2	0.0	88.9	1.4	9.7	0.083	0.503	22.412970	-101.158833
Moctezuma	59.00	1	0	2794	4.3	88.8	1.3	3.7	0.6	0.9	0.2	0.2	0.0	93.1	1.3	5.6	0.094	0.611	22.733114	-101.086152
Charcas	100.00	1	0	3361	12.6	78.8	1.8	3.1	1.9	0.9	0.3	0.6	0.0	91.4	1.8	6.8	0.093	0.612	23.109295	-101.103036
Charcas	100.00	3	0	1662	28.9	60.0	3.2	4.6	1.2	1.2	0.3	0.2	0.4	88.9	3.2	7.9	0.113	0.706	23.130708	-101.100057
T. C. San Luis Potosí - Matehuala	169.90	1	0	1723	5.7	82.4	1.9	4.7	1.7	1.0	0.9	0.7	1.0	88.1	1.9	10.0	0.107	0.616	23.481325	-100.622989

7 CARR: Ent. de Zaragoza - San Felipe

CLAVE: 00240

RUTA: MEX-037

AÑO: 2025

LUGAR	ESTACION				CLASIFICACION VEHICULAR EN PORCIENTO										COORDENADAS					
	KM	TE	SC	TDPA	M	A	B	C2	C3	T3S2	T3S3	T3S2R4	OTROS	A	B	C	K'	D	LATITUD	LONGITUD
T. C. Querétaro - San Luis Potosí	0.00	3	0	17924	1.8	63.8	4.7	11.2	2.4	11.7	2.7	1.1	0.6	65.6	4.7	29.7	0.065	0.581	21.959815	-100.823849
Lim. Edos. Term. S. L. P. Ppia. Glo.	32.00																			
Jaral de Berrios	39.00	3	0	9437	3.5	54.8	4.6	13.8	4.7	13.7	2.7	1.7	0.5	58.3	4.6	37.1	0.070	0.515	21.679185	-101.037227

SAN LUIS POTOSÍ

7 CARR : Ent. de Zaragoza - San Felipe

CLAVE: 00240

RUTA: MEX-037

AÑO: 2025

LUGAR	ESTACION				CLASIFICACION VEHICULAR EN PORCIENTO													COORDENADAS		
	KM	TE	SC	TDPA	M	A	B	C2	C3	T3S2	T3S3	T3S2R4	OTROS	A	B	C	K'	D	LATITUD	LONGITUD
San Felipe	72.00	1	0	9605	3.6	51.6	5.3	17.3	4.9	11.2	3.9	1.6	0.6	55.2	5.3	39.5	0.067	0.610	21.481451	-101.153249

8 CARR : Ent. El Huizache - Antigo Morelos

CLAVE: 00136

RUTA: MEX-080

AÑO: 2025

LUGAR	ESTACION				CLASIFICACION VEHICULAR EN PORCIENTO													COORDENADAS		
	KM	TE	SC	TDPA	M	A	B	C2	C3	T3S2	T3S3	T3S2R4	OTROS	A	B	C	K'	D	LATITUD	LONGITUD
T. C. San Luis Potosí - Matehuala (Ent. El Huizache)	0.00	3	0	2848	4.1	43.9	4.3	5.1	3.9	21.5	4.0	12.7	0.5	48.0	4.3	47.7	0.063	0.689	22.930791	-100.448422
T. Izq. Tula	57.83	1	0	2705	3.3	39.5	3.7	5.1	3.0	25.3	5.8	13.5	0.8	42.8	3.7	53.5	0.058	0.529	22.739037	-99.981034
Cd. del Maíz	112.00	1	0	1751	4.2	87.4	1.9	2.9	1.1	2.0	0.3	0.2	0.0	91.6	1.9	6.5	0.096	0.583	22.417212	-99.625520
El Naranjo	166.00	1	0	3308	7.7	82.7	1.4	4.4	1.1	1.7	0.5	0.3	0.2	90.4	1.4	8.2	0.073	0.523	22.517990	-99.335539
El Naranjo	166.00	3	0	4855	5.5	80.6	1.8	6.0	2.8	1.5	0.7	0.8	0.3	86.1	1.8	12.1	0.079	0.519	22.532477	-99.307317
Lim. Edos. Term. Tamps. Ppia. S. L. P.	173.00																			
Nuevo Morelos	180.00	3	0	1550	8.1	81.0	1.9	3.2	1.8	2.1	1.1	0.6	0.2	89.1	1.9	9.0	0.094	0.552	22.540917	-99.212220
Antigo Morelos	198.00	1	0	3173	15.8	73.7	1.5	2.3	1.9	1.9	1.2	1.4	0.3	89.5	1.5	9.0	0.077	0.510	22.553928	-99.090737

9 CARR : Ent. Tula - Cd. Victoria

CLAVE: 00179

RUTA: MEX-101

AÑO: 2025

LUGAR	ESTACION				CLASIFICACION VEHICULAR EN PORCIENTO													COORDENADAS		
	KM	TE	SC	TDPA	M	A	B	C2	C3	T3S2	T3S3	T3S2R4	OTROS	A	B	C	K'	D	LATITUD	LONGITUD
T. C. Antigo Morelos - El Huizache	0.00	3	0	4415	4.4	48.0	4.8	3.4	2.4	20.0	2.9	13.3	0.8	52.4	4.8	42.8	0.066	0.514	22.738096	-99.967923
Lim. Edos. Term. S. L. P. Ppia. Tamps.	2.40																			
T. Der. Tula (1º Acceso)	38.00	1	0	6026	4.0	50.2	4.8	5.3	2.8	18.2	3.1	10.6	1.0	54.2	4.8	41.0	0.072	0.525	22.978161	-99.738329
T. Der. Tula (2º Acceso)	41.95	3	0	5756	4.1	51.5	5.7	4.5	2.1	17.7	2.7	10.9	0.8	55.6	5.7	38.7	0.066	0.568	23.032159	-99.707963
Jaumave	112.68	1	0	6289	4.9	62.5	4.0	4.4	1.3	12.3	1.9	7.8	0.9	67.4	4.0	28.6	0.067	0.536	23.393546	-99.416114
Jaumave	112.68	3	0	6901	5.0	58.7	3.9	4.5	1.5	13.7	2.4	9.5	0.8	63.7	3.9	32.4	0.068	0.549	23.420521	-99.373255
T. Libramiento de Cd. Victoria	134.68																			
Cd. Victoria	180.00	1	1	4082	17.1	78.1	0.6	1.0	1.9	0.6	0.4	0.2	0.1	95.2	0.6	4.2	0.107	0.580	23.711040	-99.175876
Cd. Victoria	180.00	1	2	4237	17.1	78.2	0.7	0.8	1.8	0.5	0.4	0.3	0.2	95.3	0.7	4.0	0.082	0.580	23.711126	-99.175971

10 CARR : Jalpan de Serra - Rioverde

CLAVE: 00265

RUTA: MEX-069

AÑO: 2025

LUGAR	ESTACION				CLASIFICACION VEHICULAR EN PORCIENTO													COORDENADAS		
	KM	TE	SC	TDPA	M	A	B	C2	C3	T3S2	T3S3	T3S2R4	OTROS	A	B	C	K'	D	LATITUD	LONGITUD
Jalpan de Serra	0.00	3	0	6847	2.7	91.5	1.0	2.8	0.8	0.5	0.3	0.3	0.1	94.2	1.0	4.8	0.091	0.533	21.239589	-99.482459
T. Izq. Conca	35.01	1	0	2960	5.1	89.3	0.9	2.7	0.9	0.5	0.2	0.3	0.1	94.4	0.9	4.7	0.107	0.516	21.449691	-99.631159

SAN LUIS POTOSÍ

10 CARR: Jalpan de Serra - Rioverde

CLAVE: 00265

RUTA: MEX-069

AÑO: 2025

LUGAR	ESTACION				CLASIFICACION VEHICULAR EN PORCIENTO										COORDENADAS					
	KM	TE	SC	TDPA	M	A	B	C2	C3	T3S2	T3S3	T3S2R4	OTROS	A	B	C	K'	D	LATITUD	LONGITUD
Arroyo Seco	48.60	1	0	2009	3.7	88.6	1.3	4.7	0.7	0.5	0.3	0.2	0.0	92.3	1.3	6.4	0.090	0.507	21.541241	-99.687527
Lim. Edos. Term. Oro. Ppia. S. L. P.	52.27																			
San Ciro de Acosta	69.42	1	0	2616	14.2	71.5	0.6	11.6	0.9	0.6	0.4	0.2	0.0	85.7	0.6	13.7	0.085	0.516	21.648052	-99.808512
San Ciro de Acosta	69.42	3	0	3459	5.2	78.2	1.6	11.5	1.3	1.5	0.3	0.2	0.2	83.4	1.6	15.0	0.095	0.508	21.667177	-99.831591
Rioverde	105.43	1	0	9249	3.9	77.5	0.7	13.0	0.7	2.4	0.9	0.6	0.3	81.4	0.7	17.9	0.083	0.565	21.872792	-99.972824

11 CARR: Libramiento de Cd. Valles

CLAVE: 24205

RUTA: MEX-070

AÑO: 2025

LUGAR	ESTACION				CLASIFICACION VEHICULAR EN PORCIENTO										COORDENADAS					
	KM	TE	SC	TDPA	M	A	B	C2	C3	T3S2	T3S3	T3S2R4	OTROS	A	B	C	K'	D	LATITUD	LONGITUD
T. C. Cd. Valles - San Luis Potosí	0.00	3	0	8783	10.1	74.5	2.8	6.0	2.3	1.7	1.0	1.4	0.2	84.6	2.8	12.6	0.077	0.518	21.984515	-99.035180
T. C. Cd. Valles - Tampico	11.54	1	0	2967	5.8	69.0	4.5	4.5	7.2	3.7	2.7	2.3	0.3	74.8	4.5	20.7	0.081	0.577	21.974066	-98.966459

12 CARR: Libramiento de Villa de Reyes

CLAVE: 24010

RUTA: MEX-037

AÑO: 2025

LUGAR	ESTACION				CLASIFICACION VEHICULAR EN PORCIENTO										COORDENADAS					
	KM	TE	SC	TDPA	M	A	B	C2	C3	T3S2	T3S3	T3S2R4	OTROS	A	B	C	K'	D	LATITUD	LONGITUD
T. C. Ent. Zaragoza - San Felipe	0.00	3	0	8394	2.8	86.7	1.7	5.4	1.0	1.4	0.3	0.6	0.1	89.5	1.7	8.8	0.101	0.518	21.802048	-100.931518
T. C. Villa de Reyes - Bledos	3.10																			

13 CARR: Libramiento de Villa de Reyes (Poniente)

CLAVE:

RUTA: MEX-037

AÑO: 2025

LUGAR	ESTACION				CLASIFICACION VEHICULAR EN PORCIENTO										COORDENADAS					
	KM	TE	SC	TDPA	M	A	B	C2	C3	T3S2	T3S3	T3S2R4	OTROS	A	B	C	K'	D	LATITUD	LONGITUD
T. C. Ent. Zaragoza - San Felipe Sur	125.60	3	0	8152	5.0	47.8	4.5	19.2	6.3	12.1	3.7	1.2	0.2	52.8	4.5	42.7	0.074	0.618	21.706034	-101.021022
Lim. Edos. Term. Gto. Ppia. S. L. P.	132.90																			
T. C. Ent. Zaragoza - San Felipe Norte	143.64	1	0	6033	3.6	60.5	2.0	7.9	2.7	18.3	2.3	1.9	0.8	64.1	2.0	33.9	0.077	0.557	21.819020	-100.943860

14 CARR: Libramiento Villa de Arriaga

CLAVE: 24009

RUTA: MEX-080

AÑO: 2025

LUGAR	ESTACION				CLASIFICACION VEHICULAR EN PORCIENTO										COORDENADAS					
	KM	TE	SC	TDPA	M	A	B	C2	C3	T3S2	T3S3	T3S2R4	OTROS	A	B	C	K'	D	LATITUD	LONGITUD
T. C. San Luis Potosí - Lagos de Moreno (Poniente)	0.00	3	0	6010	5.3	55.2	6.6	4.2	2.8	14.7	2.5	7.7	1.0	60.5	6.6	32.9	0.073	0.569	21.924326	-101.373340
T. C. San Luis Potosí - Lagos de Moreno (Oriente)	5.00																			

SAN LUIS POTOSÍ

15 CARR: Matehuala - Ent. Puerto México

CLAVE: 00405

RUTA: MEX-057

AÑO: 2025

LUGAR	ESTACION				CLASIFICACION VEHICULAR EN PORCIENTO										COORDENADAS					
	KM	TE	SC	TDPA	M	A	B	C2	C3	T3S2	T3S3	T3S2R4	OTROS	A	B	C	K'	D	LATITUD	LONGITUD
Matehuala	0.00	3	1	5671	10.9	72.6	3.4	4.2	1.5	5.2	1.0	0.9	0.3	83.5	3.4	13.1	0.100	0.569	23.668950	-100.631987
Matehuala	0.00	3	2	6011	10.6	72.6	3.4	4.3	1.6	5.3	0.9	1.0	0.3	83.2	3.4	13.4	0.093	0.569	23.669125	-100.632103
T. Izq. Cedral	8.47	1	1	4491	7.3	72.4	2.2	8.0	1.4	5.8	1.8	0.9	0.2	79.7	2.2	18.1	0.083	0.551	23.693441	-100.619854
T. Izq. Cedral	8.47	1	2	5007	7.3	73.0	2.0	7.8	1.5	5.8	1.6	0.8	0.2	80.3	2.0	17.7	0.082	0.551	23.693715	-100.620036
T. Izq. Cedral	8.47	3	1	2525	7.7	56.2	4.4	14.2	1.2	10.6	2.7	2.3	0.7	63.9	4.4	31.7	0.088	0.521	23.699757	-100.616733
T. Izq. Cedral	8.47	3	2	2904	7.7	56.2	4.4	14.0	1.3	10.4	3.0	2.3	0.7	63.9	4.4	31.7	0.081	0.521	23.699869	-100.616989
T. Izq. Libramiento de Matehuala (Cuota)	9.30	3	1	9299	1.6	35.5	4.6	8.9	2.2	36.5	4.5	5.3	0.9	37.1	4.6	58.3	0.060	0.531	23.713161	-100.610101
T. Izq. Libramiento de Matehuala (Cuota)	9.30	3	2	8735	1.6	35.9	4.5	8.8	2.2	36.5	4.4	5.3	0.8	37.5	4.5	58.0	0.066	0.531	23.712789	-100.610592
Lim. Edos. Term. S. L. P. Ppia. N. L.	24.64																			
Santa Ana	59.65	1	1	10209	2.3	28.3	3.5	5.3	3.2	46.8	4.2	5.4	1.0	30.6	3.5	65.9	0.063	0.550	24.084508	-100.384866
Santa Ana	59.65	1	2	10014	2.4	28.6	3.6	5.2	3.1	46.7	4.2	5.3	0.9	31.0	3.6	65.4	0.059	0.550	24.084626	-100.385111
T. Der. Linares	128.99	1	1	9860	3.4	41.3	7.1	4.4	2.6	32.1	2.5	5.8	0.8	44.7	7.1	48.2	0.059	0.510	24.611984	-100.274669
T. Der. Linares	128.99	1	2	9600	3.4	40.3	6.9	4.5	2.3	32.6	2.8	6.2	1.0	43.7	6.9	49.4	0.062	0.510	24.612476	-100.275190
T. Der. Linares	128.99	3	1	8819	3.2	35.3	6.8	4.7	2.4	39.1	2.5	5.1	0.9	38.5	6.8	54.7	0.075	0.502	24.689005	-100.301771
T. Der. Linares	128.99	3	2	9253	2.8	36.6	6.7	4.6	2.2	38.8	2.5	5.0	0.8	39.4	6.7	53.9	0.059	0.502	24.689510	-100.302154
San Rafael	177.18	1	1	10604	3.6	36.8	6.1	5.9	2.8	36.7	2.8	4.4	0.9	40.4	6.1	53.5	0.072	0.588	25.023435	-100.546415
San Rafael	177.18	1	2	11237	3.4	37.4	6.2	5.6	2.4	36.6	3.0	4.6	0.8	40.8	6.2	53.0	0.051	0.588	25.022647	-100.545815
T. C. Puerto México - La Carbonera (Cuota)	202.40	1	1	10069	4.0	36.3	6.9	5.4	2.0	37.2	3.0	4.3	0.9	40.3	6.9	52.8	0.070	0.553	25.166538	-100.717788
T. C. Puerto México - La Carbonera (Cuota)	202.40	1	2	9770	4.2	35.0	6.8	5.2	2.3	37.5	3.5	4.6	0.9	39.2	6.8	54.0	0.060	0.553	25.166635	-100.718470

16 CARR: Portezuelo - Cd. Valles

CLAVE: 00023

RUTA: MEX-085

AÑO: 2025

LUGAR	ESTACION				CLASIFICACION VEHICULAR EN PORCIENTO										COORDENADAS					
	KM	TE	SC	TDPA	M	A	B	C2	C3	T3S2	T3S3	T3S2R4	OTROS	A	B	C	K'	D	LATITUD	LONGITUD
Portezuelo	81.37	3	0	6797	6.6	87.1	1.4	2.2	0.9	0.8	0.7	0.2	0.1	93.7	1.4	4.9	0.077	0.507	20.488379	-99.298648
T. Der. Tasquillo (2º Acceso)	91.25	1	0	5431	6.6	85.2	1.9	2.9	1.1	1.1	0.9	0.2	0.1	91.8	1.9	6.3	0.074	0.515	20.542165	-99.318239
T. Izq. Zimapán (1º Acceso)	113.80	1	0	6529	6.6	86.4	1.5	2.5	0.9	1.1	0.8	0.1	0.1	93.0	1.5	5.5	0.067	0.505	20.703074	-99.334631
T. Izq. Zimapán (1º Acceso)	113.80	3	0	2055	5.4	87.3	1.4	2.4	1.2	1.1	1.0	0.1	0.1	92.7	1.4	5.9	0.072	0.513	20.706113	-99.336171
La Estancia	124.45	3	0	2031	3.9	87.0	1.8	3.1	1.6	1.3	1.0	0.2	0.1	90.9	1.8	7.3	0.090	0.503	20.777744	-99.309753
Trancas	132.00	3	0	1821	4.1	86.2	1.9	3.2	1.6	1.3	1.1	0.4	0.2	90.3	1.9	7.8	0.098	0.549	20.801709	-99.261840
Jacala	181.00	3	0	2826	4.7	87.0	1.5	5.2	0.6	0.9	0.0	0.1	0.0	91.7	1.5	6.8	0.090	0.545	21.002469	-99.184780
Zacate Grande	223.80	1	0	1011	5.1	87.2	2.0	3.4	1.5	0.3	0.2	0.1	0.2	92.3	2.0	5.7	0.074	0.508	21.104693	-99.004439
T. Izq. Pisaflores	236.00	3	0	2133	8.4	83.5	1.5	4.1	1.4	0.6	0.3	0.1	0.1	91.9	1.5	6.6	0.081	0.504	21.154209	-98.945673
Lim. Edos. Term. Hgo. Ppia. S. L. P.	250.00																			
Tamazunchale	275.40	1	0	6780	25.5	67.2	2.5	2.1	0.6	0.6	0.5	0.8	0.2	92.7	2.5	4.8	0.076	0.567	21.263610	-98.799507

SAN LUIS POTOSÍ

16 CARR: Portezuelo - Cd. Valles

CLAVE: 00023

RUTA: MEX-085

AÑO: 2025

LUGAR	ESTACION				CLASIFICACION VEHICULAR EN PORCIENTO										COORDENADAS					
	KM	TE	SC	TDPA	M	A	B	C2	C3	T3S2	T3S3	T3S2R4	OTROS	A	B	C	K'	D	LATITUD	LONGITUD
T. Izq. Xilitla	310.22	1	0	4369	10.6	78.8	1.7	3.2	2.8	1.3	0.8	0.7	0.1	89.4	1.7	8.9	0.080	0.594	21.443219	-98.925593
T. Izq. Xilitla	310.22	3	0	4033	13.3	73.3	2.1	4.6	2.7	1.9	1.1	0.9	0.1	86.6	2.1	11.3	0.079	0.556	21.448769	-98.930454
T. Izq. Aquismón	335.30	1	1	3151	9.6	77.2	2.2	4.5	3.2	1.9	0.8	0.5	0.1	86.8	2.2	11.0	0.082	0.526	21.616044	-98.987429
T. Izq. Aquismón	335.30	1	2	3326	9.4	76.8	2.4	4.8	3.3	1.7	0.7	0.8	0.1	86.2	2.4	11.4	0.081	0.526	21.616041	-98.987460
Agua Hedionda	348.00	1	1	3510	4.5	80.2	2.3	5.2	4.1	1.8	1.3	0.5	0.1	84.7	2.3	13.0	0.088	0.513	21.708405	-98.962468
Agua Hedionda	348.00	1	2	3401	4.6	80.9	2.1	5.7	3.6	1.5	0.8	0.7	0.1	85.5	2.1	12.4	0.083	0.513	21.708428	-98.962623
X. C. Rayón - Ent. Tamuín (Cuota)	368.00	1	1	4147	4.5	85.9	1.9	3.6	2.5	0.7	0.6	0.2	0.1	90.4	1.9	7.7	0.093	0.554	21.884415	-98.947300
X. C. Rayón - Ent. Tamuín (Cuota)	368.00	1	2	4213	4.6	85.4	1.8	3.9	2.6	0.7	0.6	0.3	0.1	90.0	1.8	8.2	0.106	0.554	21.884393	-98.947394
Cd. Valles	380.50	1	1	6275	5.1	86.5	1.8	3.6	1.7	0.5	0.4	0.3	0.1	91.6	1.8	6.6	0.082	0.576	21.959218	-98.998620
Cd. Valles	380.50	1	2	6226	5.1	86.5	1.8	3.7	1.7	0.5	0.3	0.3	0.1	91.6	1.8	6.6	0.102	0.576	21.959277	-98.998774

17 CARR: Querétaro - San Luis Potosí

CLAVE: 00165

RUTA: MEX-057

AÑO: 2025

LUGAR	ESTACION				CLASIFICACION VEHICULAR EN PORCIENTO										COORDENADAS					
	KM	TE	SC	TDPA	M	A	B	C2	C3	T3S2	T3S3	T3S2R4	OTROS	A	B	C	K'	D	LATITUD	LONGITUD
Querétaro	0.00																			
T. Der. Libramiento de Querétaro Central	6.28	3	1	55410	2.9	88.1	0.8	4.5	0.9	2.0	0.4	0.3	0.1	91.0	0.8	8.2	0.098	0.507	20.636673	-100.428763
T. Der. Libramiento de Querétaro Lateral	6.28	3	1	29295	6.3	84.1	1.0	5.2	1.2	1.2	0.3	0.5	0.2	90.4	1.0	8.6	0.082	0.517	20.631740	-100.426340
T. Der. Libramiento de Querétaro Lateral	6.28	3	2	25860	6.6	83.2	1.2	5.4	1.4	1.3	0.2	0.4	0.3	89.8	1.2	9.0	0.078	0.517	20.637128	-100.429261
T. Der. Libramiento de Querétaro Central	6.28	3	2	53734	2.7	88.3	0.7	4.7	0.8	2.1	0.4	0.2	0.1	91.0	0.7	8.3	0.075	0.507	20.636679	-100.428899
T. C. Anillo Vial Fray Junipero Serra (Centrales)	14.00	1	1	34623	2.3	85.0	1.7	7.5	0.9	1.9	0.3	0.3	0.1	87.3	1.7	11.0	0.090	0.533	20.689383	-100.435676
T. C. Anillo Vial Fray Junipero Serra (Laterales)	14.00	1	1	35147	2.8	92.4	0.8	2.9	0.4	0.3	0.1	0.2	0.1	95.2	0.8	4.0	0.096	0.535	20.688549	-100.435409
T. C. Anillo Vial Fray Junipero Serra (Laterales)	14.00	1	2	41015	2.7	92.0	1.1	2.6	0.6	0.5	0.1	0.3	0.1	94.7	1.1	4.2	0.082	0.535	20.688024	-100.435840
T. C. Anillo Vial Fray Junipero Serra (Centrales)	14.00	1	2	29954	2.5	84.9	1.8	7.2	0.7	1.9	0.6	0.3	0.1	87.4	1.8	10.8	0.094	0.533	20.689432	-100.435836
T. Izq. Juriquilla	15.63	3	1	45744	0.9	88.1	1.2	6.2	0.9	1.6	0.5	0.4	0.2	89.0	1.2	9.8	0.100	0.507	20.718891	-100.438871
T. Izq. Juriquilla	15.63	3	2	44352	0.8	88.3	1.2	6.5	1.0	1.4	0.4	0.3	0.1	89.1	1.2	9.7	0.102	0.507	20.716169	-100.438703
T. Izq. San Miguel de Allende	28.53	1	1	38180	1.1	80.8	1.4	8.9	1.6	4.3	0.9	0.7	0.3	81.9	1.4	16.7	0.130	0.505	20.802976	-100.448738
T. Izq. San Miguel de Allende	28.53	1	2	37427	1.2	80.1	1.6	9.1	1.6	4.1	1.1	0.9	0.3	81.3	1.6	17.1	0.093	0.505	20.803002	-100.448912
T. Izq. San Miguel de Allende	28.53	3	1	26272	1.6	57.8	3.4	8.8	3.2	18.1	2.5	3.8	0.8	59.4	3.4	37.2	0.062	0.513	20.836009	-100.439762
T. Izq. San Miguel de Allende	28.53	3	2	29340	1.4	58.0	3.3	8.6	3.2	18.3	2.6	3.9	0.7	59.4	3.3	37.3	0.057	0.513	20.839028	-100.438412
Lim. Edos. Term. Oro. Ppia. Gto.	36.70																			
X. C. San José Iturbide - El Arenal	46.83	1	1	24146	4.9	59.6	4.2	7.7	3.2	17.0	1.4	1.8	0.2	64.5	4.2	31.3	0.074	0.554	20.969356	-100.429401
X. C. San José Iturbide - El Arenal	46.83	1	2	22954	4.6	59.4	4.0	7.9	3.5	16.9	1.6	1.7	0.4	64.0	4.0	32.0	0.070	0.554	20.969229	-100.429537
X. C. San José Iturbide - El Arenal	46.83	3	1	17714	5.2	50.9	6.9	6.3	3.1	21.3	2.7	3.2	0.4	56.1	6.9	37.0	0.063	0.560	20.983984	-100.434982
X. C. San José Iturbide - El Arenal	46.83	3	2	19157	5.0	51.5	6.6	6.3	3.3	21.0	2.8	3.0	0.5	56.5	6.6	36.9	0.068	0.560	20.983926	-100.435147

SAN LUIS POTOSÍ

17 CARR: Querétaro - San Luis Potosí

CLAVE: 00165

RUTA: MEX-057

AÑO: 2025

LUGAR	ESTACION				CLASIFICACION VEHICULAR EN PORCIENTO												COORDENADAS			
	KM	TE	SC	TDPA	M	A	B	C2	C3	T3S2	T3S3	T3S2R4	OTROS	A	B	C	K'	D	LATITUD	LONGITUD
X. C. Ent. San Miguel de Allende - Dr. Mora	61.93	1	1	16193	2.9	52.5	5.3	5.1	4.0	22.9	3.4	3.2	0.7	55.4	5.3	39.3	0.075	0.511	21.077062	-100.512504
X. C. Ent. San Miguel de Allende - Dr. Mora	61.93	1	2	16552	3.0	52.3	5.4	5.2	3.9	23.0	3.5	3.1	0.6	55.3	5.4	39.3	0.072	0.511	21.076846	-100.512504
X. C. San Luis de La Paz - Guanajuato	86.68	1	1	17069	3.8	42.8	7.0	6.2	3.2	28.9	4.2	3.2	0.7	46.6	7.0	46.4	0.073	0.530	21.256295	-100.586619
X. C. San Luis de La Paz - Guanajuato	86.68	1	2	17416	3.9	43.5	6.9	6.0	3.0	29.2	4.0	2.9	0.6	47.4	6.9	45.7	0.070	0.530	21.256450	-100.586824
T. Izq. San Diego de La Unión	119.07	1	1	11074	3.7	32.8	7.7	8.8	4.0	34.1	3.7	4.3	0.9	36.5	7.7	55.8	0.065	0.558	21.528290	-100.740190
T. Izq. San Diego de La Unión	119.07	1	2	11709	3.6	32.8	7.8	8.7	4.1	34.2	3.6	4.4	0.8	36.4	7.8	55.8	0.071	0.558	21.528210	-100.740350
T. Izq. San Diego de La Unión	119.07	3	1	12448	2.9	39.1	7.3	9.1	4.0	31.0	3.0	2.8	0.8	42.0	7.3	50.7	0.057	0.536	21.544841	-100.749394
T. Izq. San Diego de La Unión	119.07	3	2	11848	2.8	40.8	7.2	8.9	3.9	29.5	3.1	2.9	0.9	43.6	7.2	49.2	0.067	0.536	21.544758	-100.749551
Lim. Edos. Term. Gto. Ppia. S. L. P.	124.74																			
T. Der. Tierra Nueva	140.65	1	1	12643	7.4	45.4	5.4	6.1	2.5	25.2	2.9	4.1	1.0	52.8	5.4	41.8	0.072	0.519	21.685079	-100.694225
T. Der. Tierra Nueva	140.65	1	2	12774	7.5	46.7	5.5	6.1	2.4	23.5	3.1	4.5	0.7	54.2	5.5	40.3	0.070	0.519	21.685299	-100.694264
T. Der. Tierra Nueva	140.65	3	1	14640	8.0	48.8	5.1	6.0	2.4	22.2	2.8	3.8	0.9	56.8	5.1	38.1	0.075	0.566	21.710883	-100.686893
T. Der. Tierra Nueva	140.65	3	2	15183	7.8	50.0	4.9	5.9	2.2	22.0	2.7	3.6	0.9	57.8	4.9	37.3	0.068	0.566	21.704634	-100.684703
T. Izq. Santa María del Río	155.88	3	1	15843	8.2	52.2	5.5	4.8	2.3	20.0	2.0	4.2	0.8	60.4	5.5	34.1	0.073	0.598	21.846280	-100.741783
T. Izq. Santa María del Río	155.88	3	2	15640	8.1	52.2	5.3	4.9	2.2	20.2	1.9	4.4	0.8	60.3	5.3	34.4	0.069	0.598	21.846164	-100.741924
T. Izq. Villa de Reyes	176.35	1	1	16192	9.0	49.4	4.8	5.0	3.4	20.2	2.6	4.7	0.9	58.4	4.8	36.8	0.065	0.545	21.958714	-100.810328
T. Izq. Villa de Reyes	176.35	1	2	14991	8.8	48.5	5.0	5.3	3.6	20.5	2.7	4.5	1.1	57.3	5.0	37.7	0.070	0.545	21.960313	-100.811394
T. Izq. Villa de Reyes	176.35	3	1	22515	3.6	57.3	4.3	7.2	2.3	19.0	2.4	3.1	0.8	60.9	4.3	34.8	0.081	0.628	21.986053	-100.825155
T. Izq. Villa de Reyes	176.35	3	2	23142	3.7	56.7	4.5	7.1	2.4	19.2	2.5	3.2	0.7	60.4	4.5	35.1	0.063	0.628	21.986092	-100.825367
T. Izq. Villa de Arriaga (Cuota)	182.60	1	1	32864	2.4	66.0	5.3	4.2	2.2	15.0	1.7	2.5	0.7	68.4	5.3	26.3	0.064	0.578	22.014208	-100.840434
T. Izq. Villa de Arriaga (Cuota)	182.60	1	2	31728	2.3	66.0	5.4	4.3	2.3	15.1	1.6	2.4	0.6	68.3	5.4	26.3	0.078	0.578	22.011793	-100.839323
X. C. Libramiento de San Luis Potosí	184.80	1	1	34775	2.1	61.0	4.5	7.7	1.7	18.9	1.5	2.0	0.6	63.1	4.5	32.4	0.087	0.573	22.026121	-100.846897
X. C. Libramiento de San Luis Potosí	184.80	1	2	33996	2.2	60.6	4.4	7.8	1.8	19.0	1.4	2.1	0.7	62.8	4.4	32.8	0.097	0.573	22.025890	-100.846990
X. Periférico de San Luis Potosí (Central)	197.50	1	1	66479	4.2	88.8	1.0	2.9	0.5	0.7	0.4	1.1	0.4	93.0	1.0	6.0	0.065	0.554	22.121802	-100.912748
X. Periférico de San Luis Potosí (Lateral)	197.50	1	1	22746	3.9	80.4	1.3	7.3	2.6	2.3	0.7	1.0	0.5	84.3	1.3	14.4	0.121	0.554	22.121942	-100.912708
X. Periférico de San Luis Potosí (Central)	197.50	1	2	59940	4.4	88.5	1.1	3.0	0.6	0.8	0.3	0.9	0.4	92.9	1.1	6.0	0.074	0.554	22.121671	-100.912882
X. Periférico de San Luis Potosí (Lateral)	197.50	1	2	23639	3.7	79.9	1.4	7.4	2.7	2.4	0.6	1.2	0.7	83.6	1.4	15.0	0.103	0.554	22.121382	-100.913101
San Luis Potosí	201.66																			

18 CARR: Ramal a Aeropuerto de S. L. P.

CLAVE: 24206

RUTA: MEX-057

AÑO: 2025

LUGAR	ESTACION				CLASIFICACION VEHICULAR EN PORCIENTO												COORDENADAS			
	KM	TE	SC	TDPA	M	A	B	C2	C3	T3S2	T3S3	T3S2R4	OTROS	A	B	C	K'	D	LATITUD	LONGITUD
T. C. San Luis Potosí - Matehuala	0.00	3	1	3353	7.1	82.7	1.7	4.4	1.3	1.2	0.2	1.1	0.3	89.8	1.7	8.5	0.085	0.522	22.228620	-100.920521
T. C. San Luis Potosí - Matehuala	0.00	3	2	3343	7.5	82.2	1.9	4.6	1.1	1.3	0.1	1.1	0.2	89.7	1.9	8.4	0.093	0.522	22.228566	-100.920571

SAN LUIS POTOSÍ

18 CARR: Ramal a Aeropuerto de S. L. P.

CLAVE: 24206

RUTA: MEX-057

AÑO: 2025

LUGAR	ESTACION	CLASIFICACION VEHICULAR EN PORCIENTO														COORDENADAS						
		KM	TE	SC	TDPA	M	A	B	C2	C3	T3S2	T3S3	T3S2R4	OTROS	A	B	C	K'	D	LATITUD	LONGITUD	
Aeropuerto de S. L. P.	6.00																					

19 CARR: Ramal a Ojo de Agua

CLAVE: 24023

RUTA: MEX-062

AÑO: 2025

LUGAR	ESTACION	CLASIFICACION VEHICULAR EN PORCIENTO														COORDENADAS					
		KM	TE	SC	TDPA	M	A	B	C2	C3	T3S2	T3S3	T3S2R4	OTROS	A	B	C	K'	D	LATITUD	LONGITUD
T. C. Ent. Carbonera - Ent. San Tiburcio	0.00	3	0	3116	7.5	77.7	0.5	10.7	0.2	2.5	0.6	0.1	0.2	85.2	0.5	14.3	0.082	0.506	23.718639	-100.650680	
Ojo de Agua	6.23																				

20 CARR: Ramal a Rayón

CLAVE: 24626

RUTA: MEX-070

AÑO: 2025

LUGAR	ESTACION	CLASIFICACION VEHICULAR EN PORCIENTO														COORDENADAS						
		KM	TE	SC	TDPA	M	A	B	C2	C3	T3S2	T3S3	T3S2R4	OTROS	A	B	C	K'	D	LATITUD	LONGITUD	
T. C. (Cd. Valles - San Luis Potosí)	0.00																					
Rayón	1.50	1	0	4500	9.1	82.8	2.5	3.3	0.9	0.8	0.4	0.2	0.0	91.9	2.5	5.6	0.095	0.507	21.848119	-99.629610		

21 CARR: San Juan del Río - Xilitla

CLAVE: 00183

RUTA: MEX-120

AÑO: 2025

LUGAR	ESTACION	CLASIFICACION VEHICULAR EN PORCIENTO														COORDENADAS						
		KM	TE	SC	TDPA	M	A	B	C2	C3	T3S2	T3S3	T3S2R4	OTROS	A	B	C	K'	D	LATITUD	LONGITUD	
San Juan del Río	0.00																					
T. Der. Libramiento de San Juan del Río	5.20	3	1	18216	2.6	88.3	1.7	3.5	1.5	1.3	0.6	0.3	0.2	90.9	1.7	7.4	0.123	0.508	20.426980	-99.974345		
T. Der. Libramiento de San Juan del Río	5.20	3	2	18841	2.7	87.7	1.8	3.6	1.6	1.4	0.7	0.3	0.2	90.4	1.8	7.8	0.125	0.508	20.427045	-99.974448		
T. Der. Tequisquiapan	19.80	1	1	13008	3.5	88.5	1.4	3.2	1.6	1.0	0.4	0.3	0.1	92.0	1.4	6.6	0.114	0.531	20.513184	-99.905728		
T. Der. Tequisquiapan	19.80	1	2	11467	3.5	87.7	1.5	3.2	1.9	1.1	0.4	0.5	0.2	91.2	1.5	7.3	0.094	0.531	20.513296	-99.905810		
T. Der. Tequisquiapan	19.80	3	1	11696	3.2	89.0	1.6	2.7	1.2	1.1	0.7	0.3	0.2	92.2	1.6	6.2	0.093	0.506	20.543488	-99.901972		
T. Der. Tequisquiapan	19.80	3	2	11397	3.4	87.8	1.8	3.1	1.4	1.3	0.7	0.3	0.2	91.2	1.8	7.0	0.089	0.506	20.542924	-99.901982		
Ezequiel Montes	36.50	1	1	9032	4.0	81.4	1.9	6.7	2.8	1.9	0.7	0.4	0.2	85.4	1.9	12.7	0.118	0.529	20.639749	-99.907303		
Ezequiel Montes	36.50	1	2	8026	3.9	81.7	1.8	6.8	2.6	1.8	0.8	0.4	0.2	85.6	1.8	12.6	0.094	0.529	20.640773	-99.907091		
Ezequiel Montes	36.50	3	1	6264	3.7	90.7	0.8	3.0	0.8	0.5	0.3	0.2	0.0	94.4	0.8	4.8	0.095	0.510	20.680922	-99.888351		
Ezequiel Montes	36.50	3	2	6523	3.7	90.4	0.8	3.2	0.9	0.5	0.3	0.2	0.0	94.1	0.8	5.1	0.094	0.510	20.681006	-99.888447		
Cadereyta	47.90	3	1	5693	3.2	85.1	1.7	3.5	3.0	1.7	1.4	0.4	0.0	88.3	1.7	10.0	0.107	0.514	20.702487	-99.801522		
Cadereyta	47.90	3	2	5385	3.2	85.1	1.7	3.4	3.1	1.8	1.2	0.5	0.0	88.3	1.7	10.0	0.098	0.514	20.702554	-99.801586		
Vizarrón de Montes	73.50	3	0	3024	2.6	84.9	1.3	4.6	2.8	1.8	1.4	0.5	0.1	87.5	1.3	11.2	0.082	0.503	20.847384	-99.713325		
T. Der. San Joaquín	79.50	3	0	1208	2.8	83.6	1.9	9.4	1.4	0.6	0.2	0.1	0.0	86.4	1.9	11.7	0.113	0.520	20.884679	-99.707004		

SAN LUIS POTOSÍ

21 CARR: San Juan del Río - Xilitla

CLAVE: 00183

RUTA: MEX-120

AÑO: 2025

LUGAR	ESTACION				CLASIFICACION VEHICULAR EN PORCIENTO										COORDENADAS					
	KM	TE	SC	TDPA	M	A	B	C2	C3	T3S2	T3S3	T3S2R4	OTROS	A	B	C	K'	D	LATITUD	LONGITUD
T. Izq. Higuerrillas	89.10	3	0	3260	2.6	89.8	1.6	4.2	1.4	0.4	0.0	0.0	0.0	92.4	1.6	6.0	0.112	0.507	20.951662	-99.748958
T. Izq. Peñamiller	103.00	3	0	2612	3.6	84.3	1.5	8.7	1.4	0.4	0.1	0.0	0.0	87.9	1.5	10.6	0.117	0.518	21.040357	-99.739794
Pinal de Amoles	140.00	3	0	2649	3.4	90.5	0.9	3.0	1.6	0.3	0.1	0.2	0.0	93.9	0.9	5.2	0.101	0.509	21.138951	-99.620101
Jalpan de Serra	179.30	3	0	9872	4.4	91.0	0.5	2.3	0.5	0.5	0.4	0.3	0.1	95.4	0.5	4.1	0.080	0.515	21.209416	-99.454190
Landa de Matamoros	201.60	3	0	3267	2.0	90.9	1.2	3.8	0.9	0.5	0.3	0.3	0.1	92.9	1.2	5.9	0.105	0.515	21.186138	-99.314357
El Lobo	236.40	3	0	1811	4.2	85.4	0.7	7.4	1.4	0.4	0.5	0.0	0.0	89.6	0.7	9.7	0.106	0.511	21.292211	-99.116107
Lim. Edos. Term. Oro. Ppia. S. L. P.	238.33																			
Xilitla	266.40	1	0	3266	7.9	78.1	0.5	8.6	1.8	2.0	0.7	0.3	0.1	86.0	0.5	13.5	0.080	0.538	21.377868	-99.004335
T. C. Portezuelo - Cd. Valles	276.98	1	0	3563	5.7	83.5	1.4	6.0	1.3	1.3	0.4	0.3	0.1	89.2	1.4	9.4	0.092	0.532	21.437267	-98.933495

22 CARR: San Luis Potosí - Ent. Arcinas

CLAVE: 00134

RUTA: MEX-049

AÑO: 2025

LUGAR	ESTACION				CLASIFICACION VEHICULAR EN PORCIENTO										COORDENADAS					
	KM	TE	SC	TDPA	M	A	B	C2	C3	T3S2	T3S3	T3S2R4	OTROS	A	B	C	K'	D	LATITUD	LONGITUD
T. C. San Luis Potosí - Matehuala	0.00																			
T. Izq. Periférico de San Luis Potosí	9.35	3	1	12919	5.3	82.9	2.2	4.1	1.4	1.8	0.9	1.0	0.4	88.2	2.2	9.6	0.086	0.525	22.206628	-101.031928
T. Izq. Periférico de San Luis Potosí	9.35	3	2	12442	5.4	83.1	2.1	4.2	1.3	1.6	0.8	1.0	0.5	88.5	2.1	9.4	0.083	0.525	22.206546	-101.032035
Mexquitic	22.50	1	1	6936	9.1	67.2	2.6	4.5	2.1	8.3	2.3	3.2	0.7	76.3	2.6	21.1	0.098	0.528	22.247910	-101.102659
Mexquitic	22.50	1	2	6658	9.2	67.4	2.6	4.4	1.8	8.4	2.2	3.1	0.9	76.6	2.6	20.8	0.113	0.528	22.249038	-101.105047
Mexquitic	22.50	3	1	6661	5.3	67.5	3.7	4.7	2.0	10.1	2.4	3.3	1.0	72.8	3.7	23.5	0.072	0.600	22.256584	-101.125963
Mexquitic	22.50	3	2	6561	5.1	67.4	3.5	4.8	2.1	10.2	2.4	3.5	1.0	72.5	3.5	24.0	0.071	0.600	22.256523	-101.126019
T. Der. Charcas	30.90	1	1	7551	4.2	67.5	4.4	5.7	2.0	9.3	2.1	3.9	0.9	71.7	4.4	23.9	0.081	0.534	22.308335	-101.156003
T. Der. Charcas	30.90	1	2	7390	4.3	67.9	4.2	5.5	2.1	9.2	2.0	3.8	1.0	72.2	4.2	23.6	0.089	0.534	22.308241	-101.156080
T. Der. Charcas	30.90	3	1	5880	4.8	68.1	3.7	4.4	2.5	8.6	2.9	4.1	0.9	72.9	3.7	23.4	0.078	0.534	22.318271	-101.170307
T. Der. Charcas	30.90	3	2	5270	4.8	67.4	3.7	4.6	2.6	8.6	3.2	4.3	0.8	72.2	3.7	24.1	0.086	0.534	22.318207	-101.170357
Lim. Edos. Term. S. L. P. Ppia. Zac.	55.13																			
Lim. Edos. Term. Zac. Ppia. S. L. P.	89.30																			
T. Der. Salinas	99.00	1	1	3539	5.6	59.4	5.5	4.2	2.6	12.5	4.0	5.2	1.0	65.0	5.5	29.5	0.078	0.513	22.603035	-101.706036
T. Der. Salinas	99.00	1	2	3847	5.8	58.6	5.5	4.3	2.6	13.0	3.9	5.4	0.9	64.4	5.5	30.1	0.089	0.513	22.602930	-101.706095
T. Der. Salinas	99.00	3	1	3977	5.9	60.2	4.6	4.9	2.2	13.0	3.2	5.2	0.8	66.1	4.6	29.3	0.088	0.595	22.619302	-101.737911
T. Der. Salinas	99.00	3	2	4643	5.8	60.0	4.9	5.1	2.0	13.0	3.3	5.2	0.7	65.8	4.9	29.3	0.095	0.595	22.619231	-101.738789
Lim. Edos. Term. S. L. P. Ppia. Zac.	122.47																			
T. Izq. Pánfilo Natera	139.00	1	1	4048	4.0	53.5	4.9	13.9	2.9	11.4	3.6	4.9	0.9	57.5	4.9	37.6	0.078	0.529	22.678794	-102.096585
T. Izq. Pánfilo Natera	139.00	1	2	4127	3.5	53.8	4.8	14.0	2.9	11.5	3.6	5.1	0.8	57.3	4.8	37.9	0.078	0.529	22.678613	-102.096611
Ent. Arcinas	162.98	1	1	4649	2.6	57.1	6.9	13.2	3.4	8.1	3.9	3.9	0.9	59.7	6.9	33.4	0.074	0.560	22.719950	-102.325293

SAN LUIS POTOSÍ

22 CARR: San Luis Potosí - Ent. Arcinas

CLAVE: 00134

RUTA: MEX-049

AÑO: 2025

LUGAR	ESTACION				CLASIFICACION VEHICULAR EN PORCIENTO														COORDENADAS	
	KM	TE	SC	TDPA	M	A	B	C2	C3	T3S2	T3S3	T3S2R4	OTROS	A	B	C	K'	D	LATITUD	LONGITUD
Ent. Arcinas	162.98	1	2	4813	2.4	56.8	6.8	13.3	3.7	8.1	4.2	3.7	1.0	59.2	6.8	34.0	0.075	0.560	22.719773	-102.325350

23 CARR: San Luis Potosí - Lagos de Moreno

CLAVE: 00133

RUTA: MEX-070-080

AÑO: 2025

LUGAR	ESTACION				CLASIFICACION VEHICULAR EN PORCIENTO														COORDENADAS	
	KM	TE	SC	TDPA	M	A	B	C2	C3	T3S2	T3S3	T3S2R4	OTROS	A	B	C	K'	D	LATITUD	LONGITUD
San Luis Potosí	0.00	3	1	18832	2.7	93.4	0.4	1.7	0.6	0.4	0.3	0.2	0.3	96.1	0.4	3.5	0.087	0.535	22.133833	-101.031022
San Luis Potosí	0.00	3	2	19397	2.9	93.4	0.3	1.6	0.4	0.2	0.5	0.4	0.3	96.3	0.3	3.4	0.092	0.535	22.133762	-101.030904
X. Periférico de San Luis Potosí	8.41	3	0	13085	4.1	82.6	1.5	4.8	2.0	2.8	1.3	0.5	0.4	86.7	1.5	11.8	0.078	0.648	22.127522	-101.045546
El Tepetate	41.90	1	0	8072	3.4	64.4	4.0	4.7	2.6	11.5	3.6	4.8	1.0	67.8	4.0	28.2	0.064	0.588	22.025621	-101.224392
El Tepetate	41.90	3	0	8827	3.6	65.6	3.7	4.1	2.5	10.2	2.8	6.5	1.0	69.2	3.7	27.1	0.067	0.557	22.004438	-101.253863
Villa de Arriaga	61.90	3	0	5026	3.2	67.2	4.8	6.7	2.7	9.1	3.5	2.2	0.6	70.4	4.8	24.8	0.064	0.534	21.896940	-101.408368
Lim. Edos. Term. S. L. P. Ppia. Zac.	70.23																			
Lim. Edos. Term. Zac. Ppia. Jal.	82.94																			
Ojuelos de Jalisco	83.20	1	0	5827	4.6	73.9	4.2	5.8	2.1	5.4	2.2	1.6	0.2	78.5	4.2	17.3	0.081	0.504	21.875475	-101.572926
Ojuelos de Jalisco	83.20	3	0	2749	6.6	73.9	3.5	4.7	1.6	5.1	2.5	1.8	0.3	80.5	3.5	16.0	0.082	0.564	21.854309	-101.593879
X. C. Lagos de Moreno - San Luis Potosí (Cuota)	140.00	1	0	4600	7.7	72.5	2.9	5.9	2.0	4.4	2.2	2.2	0.2	80.2	2.9	16.9	0.082	0.546	21.446097	-101.808366
X. C. León - Aguascalientes	146.90	1	1	7986	7.2	62.2	4.6	5.4	2.6	10.6	1.7	5.3	0.4	69.4	4.6	26.0	0.114	0.631	21.375725	-101.894433
X. C. León - Aguascalientes	146.90	1	2	8956	7.3	62.2	4.5	5.5	2.7	10.5	1.6	5.2	0.5	69.5	4.5	26.0	0.090	0.631	21.375635	-101.894360
Lagos de Moreno	150.00																			

24 CARR: San Luis Potosí - Matehuala

CLAVE: 24508

RUTA: MEX-057

AÑO: 2025

LUGAR	ESTACION				CLASIFICACION VEHICULAR EN PORCIENTO														COORDENADAS	
	KM	TE	SC	TDPA	M	A	B	C2	C3	T3S2	T3S3	T3S2R4	OTROS	A	B	C	K'	D	LATITUD	LONGITUD
San Luis Potosí	0.00																			
X. Periférico de San Luis Potosí	7.36	3	1	17881	3.1	80.2	1.8	8.2	2.1	2.3	1.1	0.9	0.3	83.3	1.8	14.9	0.083	0.507	22.207482	-100.919666
X. Periférico de San Luis Potosí	7.36	3	2	17216	3.3	80.6	1.6	8.4	1.8	2.5	0.9	0.7	0.2	83.9	1.6	14.5	0.080	0.507	22.207553	-100.919733
X. C. Libramiento Norponiente de San Luis Potosí (Cuota)	16.16	3	1	7812	2.0	67.8	3.7	4.6	2.9	10.7	3.2	4.0	1.1	69.8	3.7	26.5	0.087	0.525	22.267205	-100.865018
X. C. Libramiento Norponiente de San Luis Potosí (Cuota)	16.16	3	2	7746	2.1	67.4	3.8	4.7	3.0	10.9	3.2	3.9	1.0	69.5	3.8	26.7	0.090	0.525	22.267317	-100.865084
Ventura (X. Nuevo Libramiento de SLP)	33.20	3	1	16858	2.6	40.0	5.0	4.6	3.3	33.2	3.9	6.4	1.0	42.6	5.0	52.4	0.064	0.531	22.335589	-100.798233
Ventura (X. Nuevo Libramiento de SLP)	33.20	3	2	17468	2.4	39.2	5.3	4.8	3.5	33.4	4.2	6.3	0.9	41.6	5.3	53.1	0.061	0.531	22.335554	-100.798833
T. Der. Villa Hidalgo Sur	45.94	1	1	18510	2.8	43.2	6.2	2.9	2.3	31.6	4.1	6.2	0.7	46.0	6.2	47.8	0.060	0.532	22.417762	-100.719139
T. Der. Villa Hidalgo Sur	45.94	1	2	17604	2.9	43.1	6.3	2.8	2.4	31.4	4.2	6.1	0.8	46.0	6.3	47.7	0.060	0.532	22.417827	-100.719322
T. Der. Villa Hidalgo Sur	45.94	3	1	15056	2.5	43.7	6.7	7.9	2.1	25.8	4.6	5.9	0.8	46.2	6.7	47.1	0.084	0.683	22.433584	-100.710142

SAN LUIS POTOSÍ

24 CARR: San Luis Potosí - Matehuala

CLAVE: 24508

RUTA: MEX-057

AÑO: 2025

LUGAR	ESTACION				CLASIFICACION VEHICULAR EN PORCIENTO										COORDENADAS					
	KM	TE	SC	TDPA	M	A	B	C2	C3	T3S2	T3S3	T3S2R4	OTROS	A	B	C	K'	D	LATITUD	LONGITUD
T. Der. Villa Hidalgo Sur	45.94	3	2	14666	2.4	43.5	6.6	8.0	2.2	25.9	4.5	6.0	0.9	45.9	6.6	47.5	0.065	0.683	22.433647	-100.710421
T. Der. Villa Hidalgo Norte	52.00	3	1	15972	1.8	46.7	3.9	5.4	3.0	28.6	3.5	6.2	0.9	48.5	3.9	47.6	0.067	0.509	22.513214	-100.665221
T. Der. Villa Hidalgo Norte	52.00	3	2	16564	1.9	46.9	3.8	5.3	3.1	28.5	3.6	6.1	0.8	48.8	3.8	47.4	0.066	0.509	22.509961	-100.665506
T. Izq. Villa Arista	61.35	1	1	16748	2.8	46.5	6.8	3.5	2.5	27.2	4.0	6.0	0.7	49.3	6.8	43.9	0.060	0.555	22.567078	-100.638937
T. Izq. Villa Arista	61.35	1	2	16001	2.7	46.9	6.7	3.3	2.4	26.9	4.2	6.1	0.8	49.6	6.7	43.7	0.064	0.555	22.565834	-100.641777
T. Der. Ríoverde (Cuota)	65.22	1	1	13991	2.8	46.1	5.4	6.5	2.6	27.5	3.2	5.0	0.9	48.9	5.4	45.7	0.068	0.537	22.587659	-100.598706
T. Der. Ríoverde (Cuota)	65.22	1	2	14447	2.9	46.5	5.5	6.4	2.4	27.3	3.1	5.1	0.8	49.4	5.5	45.1	0.069	0.537	22.587943	-100.598551
T. Der. Guadalcázar	75.70	1	1	11832	4.3	45.7	5.4	4.6	3.0	27.7	3.4	5.2	0.7	50.0	5.4	44.6	0.057	0.505	22.634396	-100.522746
T. Der. Guadalcázar	75.70	1	2	12187	4.1	45.7	5.5	4.5	3.1	27.5	3.5	5.3	0.8	49.8	5.5	44.7	0.051	0.505	22.634470	-100.522918
T. Der. Guadalcázar	75.70	3	1	15144	3.9	47.1	4.5	4.3	3.2	27.7	3.4	5.3	0.6	51.0	4.5	44.5	0.059	0.519	22.649960	-100.512881
T. Der. Guadalcázar	75.70	3	2	13231	3.8	46.2	4.6	4.5	3.3	28.0	3.5	5.4	0.7	50.0	4.6	45.4	0.058	0.519	22.650047	-100.513056
T. Der. Cd. del Maiz	109.62	3	1	9984	3.2	35.2	6.0	4.3	2.7	38.8	3.8	5.2	0.8	38.4	6.0	55.6	0.068	0.548	22.942261	-100.461861
T. Der. Cd. del Maiz	109.62	3	2	11037	3.3	35.1	5.9	4.2	2.6	38.8	3.9	5.3	0.9	38.4	5.9	55.7	0.066	0.548	22.941759	-100.461909
La Bonita	171.40	1	1	12817	3.6	37.5	5.3	4.9	2.9	36.0	3.6	5.3	0.9	41.1	5.3	53.6	0.062	0.586	23.476763	-100.612748
La Bonita	171.40	1	2	11206	3.7	37.4	5.4	4.6	3.3	36.1	3.5	5.2	0.8	41.1	5.4	53.5	0.053	0.586	23.476733	-100.612937
Matehuala	187.39	1	1	13663	3.8	40.0	4.9	5.0	2.7	35.2	3.3	4.1	1.0	43.8	4.9	51.3	0.053	0.533	23.574509	-100.631164
Matehuala	187.39	1	2	13096	3.9	40.4	4.8	5.0	2.6	34.8	3.1	4.5	0.9	44.3	4.8	50.9	0.055	0.533	23.574499	-100.631472

25 CARR: T. C. (Ent. El Huizache- Ant. Morelos)-El Salto

CLAVE: 24204

RUTA: MEX-080

AÑO: 2025

LUGAR	ESTACION				CLASIFICACION VEHICULAR EN PORCIENTO										COORDENADAS					
	KM	TE	SC	TDPA	M	A	B	C2	C3	T3S2	T3S3	T3S2R4	OTROS	A	B	C	K'	D	LATITUD	LONGITUD
T. C. El Huizache - Ant. Morelos	0.00	3	0	3405	3.9	82.0	1.3	7.0	1.7	2.0	0.5	1.2	0.4	85.9	1.3	12.8	0.096	0.602	22.535266	-99.307500
Salto del Agua	12.00																			

26 CARR: T. C. (Oro - S.L.P.) - Tierra Nueva

CLAVE: 24203

RUTA: MEX-057

AÑO: 2025

LUGAR	ESTACION				CLASIFICACION VEHICULAR EN PORCIENTO										COORDENADAS					
	KM	TE	SC	TDPA	M	A	B	C2	C3	T3S2	T3S3	T3S2R4	OTROS	A	B	C	K'	D	LATITUD	LONGITUD
T. C. Querétaro - San Luis Potosí	0.00	3	0	1747	5.9	72.8	0.5	12.8	3.3	2.0	2.1	0.4	0.2	78.7	0.5	20.8	0.091	0.635	21.694935	-100.680203
Tierra Nueva	13.10																			

SAN LUIS POTOSÍ

27 CARR: T. C. (S.L.P. - Matehuala) - Villa Hidalgo

CLAVE: 24619

RUTA: MEX-057

AÑO: 2025

LUGAR	ESTACION				CLASIFICACION VEHICULAR EN PORCIENTO														COORDENADAS	
	KM	TE	SC	TDPA	M	A	B	C2	C3	T3S2	T3S3	T3S2R4	OTROS	A	B	C	K'	D	LATITUD	LONGITUD
Paso por Villa Hidalgo (Sur)	42.00	3	0	2958	4.2	76.4	2.4	6.3	3.3	3.6	1.8	1.6	0.4	80.6	2.4	17.0	0.085	0.524	22.433572	-100.699279
Paso por Villa Hidalgo (Norte)	52.47	1	0	3500	3.8	76.6	3.8	7.3	1.8	3.1	2.7	0.7	0.2	80.4	3.8	15.8	0.083	0.589	22.495147	-100.665791

28 CARR: Tamazunchale - San Felipe Orizatlán

CLAVE: 00609

RUTA: MEX-085

AÑO: 2025

LUGAR	ESTACION				CLASIFICACION VEHICULAR EN PORCIENTO														COORDENADAS	
	KM	TE	SC	TDPA	M	A	B	C2	C3	T3S2	T3S3	T3S2R4	OTROS	A	B	C	K'	D	LATITUD	LONGITUD
T. C. Portezuelo - Cd. Valles	0.00	3	0	17226	25.2	69.8	0.8	2.8	0.5	0.4	0.1	0.3	0.1	95.0	0.8	4.2	0.077	0.525	21.250604	-98.765548
Lim. Edos. Term. S. L. P. Ppia. Hgo.	18.50																			
San Felipe Orizatlán	27.10	1	0	3582	18.4	69.1	2.0	7.3	1.5	0.7	0.4	0.5	0.1	87.5	2.0	10.5	0.080	0.528	21.170696	-98.617911

29 CARR: Lagos de Moreno - Villa de Arriaga (Cuota)

CLAVE:

RUTA: MEX-080D

AÑO: 2025

LUGAR	ESTACION				CLASIFICACION VEHICULAR EN PORCIENTO														COORDENADAS	
	KM	TE	SC	TDPA	M	A	B	C2	C3	T3S2	T3S3	T3S2R4	OTROS	A	B	C	K'	D	LATITUD	LONGITUD
X. C. San Luis Potosí - Lagos de Moreno	12.10	3	0	8139	14.4	34.1	8.9	5.7	4.0	20.0	3.4	8.6	0.9	48.5	8.9	42.6	0.068	0.523	21.448599	-101.813000
T. Der. El Cuarenta	22.20	3	0	7327	5.4	37.8	6.6	8.3	2.9	22.8	3.9	11.3	1.0	43.2	6.6	50.2	0.057	0.522	21.510954	-101.736512
Lim. Edos. Term. Jal. Ppia. Gto.	46.30																			
X. C. Dolores Hidalgo - Ojuelos de Jalisco	58.18	1	0	9413	2.6	67.5	8.9	14.3	1.8	0.9	2.1	1.2	0.7	70.1	8.9	21.0	0.069	0.515	21.739457	-101.524112
Lim. Edos. Term. Gto. Ppia. SLP.	68.63																			
X. C. San Luis Potosí - Villa de Arriaga (Cuota)	78.00	1	0	6796	3.8	43.4	7.0	6.5	2.5	22.4	3.2	10.2	1.0	47.2	7.0	45.8	0.065	0.518	21.893710	-101.404812

30 CARR: Libramiento de Matehuala (Cuota)

CLAVE: 24205

RUTA: MEX-057D

AÑO: 2025

LUGAR	ESTACION				CLASIFICACION VEHICULAR EN PORCIENTO														COORDENADAS	
	KM	TE	SC	TDPA	M	A	B	C2	C3	T3S2	T3S3	T3S2R4	OTROS	A	B	C	K'	D	LATITUD	LONGITUD
T. C. San Luis Potosí - Matehuala	0.00	3	1	8073	3.0	26.0	6.6	5.5	2.3	47.2	3.3	4.9	1.2	29.0	6.6	64.4	0.061	0.544	23.602381	-100.622519
T. C. San Luis Potosí - Matehuala	0.00	3	2	8698	2.6	27.2	6.8	5.3	2.1	47.0	3.4	4.6	1.0	29.8	6.8	63.4	0.056	0.544	23.602582	-100.622698
Plaza de Cobro Matehuala	7.00	2	1	7474	0.1	22.0	1.5	5.7	3.6	55.3	3.8	6.6	1.4	22.1	1.5	76.4	0.073	0.500	23.664125	-100.607230
Plaza de Cobro Matehuala	7.00	2	2	7474	0.1	22.0	1.5	5.7	3.6	55.3	3.8	6.6	1.4	22.1	1.5	76.4	0.073	0.500	23.664125	-100.607230
T. C. Matehuala - Ent. Puerto México	14.20	1	1	8290	1.7	30.9	3.9	7.5	2.4	42.0	5.2	5.5	0.9	32.6	3.9	63.5	0.071	0.615	23.694254	-100.611564
T. C. Matehuala - Ent. Puerto México	14.20	1	2	8889	1.7	31.2	4.0	7.6	2.5	41.8	5.1	5.3	0.8	32.9	4.0	63.1	0.056	0.615	23.694225	-100.611842

SAN LUIS POTOSÍ

31 CARR: Libramiento Norponiente de San Luis Potosí (Cuota)

CLAVE:

RUTA: MEX-057D

AÑO: 2025

LUGAR	ESTACION				CLASIFICACION VEHICULAR EN PORCIENTO												COORDENADAS			
	KM	TE	SC	TDPA	M	A	B	C2	C3	T3S2	T3S3	T3S2R4	OTROS	A	B	C	K'	D	LATITUD	LONGITUD
T. Libramiento Oriente de San Luis Potosí (Cuota)	0.00																			
X. C. San Luis Potosí - Matehuala	5.60	1	0	3456	8.1	32.6	8.1	5.7	4.8	25.4	4.4	10.0	0.9	40.7	8.1	51.2	0.057	0.505	22.254830	-100.856353
X. C. San Luis Potosí - Matehuala	5.60	3	0	5856	5.9	38.6	4.9	7.1	3.9	25.2	4.3	9.4	0.7	44.5	4.9	50.6	0.057	0.511	22.282590	-100.894288
Plaza de Cobro Vicente Rangel Lozano	17.40	2	0	5211	0.2	22.1	1.7	4.5	5.6	38.9	5.9	17.6	3.5	22.3	1.7	76.0	0.067	0.500	22.299904	-100.971154
T. C. San Luis Potosí - Ent. Arcinas	31.20	1	0	5812	5.5	32.6	5.2	4.8	3.3	28.6	5.3	13.7	1.0	38.1	5.2	56.7	0.060	0.595	22.226901	-101.049278
T. C. San Luis Potosí - Ent. Arcinas	31.20	3	0	3778	6.7	35.7	5.1	8.4	4.3	23.2	5.2	10.4	1.0	42.4	5.1	52.5	0.055	0.684	22.208399	-101.058831
T. C. San Luis Potosí Lagos de Moreno	54.50																			

32 CARR: Libramiento Oriente de San Luis Potosí (Cuota)

CLAVE: 24009

RUTA: MEX-057D

AÑO: 2025

LUGAR	ESTACION				CLASIFICACION VEHICULAR EN PORCIENTO												COORDENADAS			
	KM	TE	SC	TDPA	M	A	B	C2	C3	T3S2	T3S3	T3S2R4	OTROS	A	B	C	K'	D	LATITUD	LONGITUD
T. C. Querétaro - San Luis Potosí	0.00																			
X. C. Cd. Valles - San Luis Potosí	11.00	1	1	11900	3.8	24.8	7.6	6.2	3.7	42.3	4.2	6.5	0.9	28.6	7.6	63.8	0.078	0.569	22.118724	-100.826009
X. C. Cd. Valles - San Luis Potosí	11.00	1	2	12934	3.7	24.3	7.7	6.3	3.8	42.5	4.3	6.6	0.8	28.0	7.7	64.3	0.056	0.569	22.118775	-100.826185
Plaza de Cobro San Nicolás de Los Jassos	11.22	2	1	9676	0.2	22.1	2.2	5.5	4.6	51.3	4.5	7.7	1.9	22.3	2.2	75.5	0.067	0.500	22.129780	-100.825002
Plaza de Cobro San Nicolás de Los Jassos	11.22	2	2	9676	0.2	22.1	2.2	5.5	4.6	51.3	4.5	7.7	1.9	22.3	2.2	75.5	0.067	0.500	22.129780	-100.825002
T. C. San Luis Potosí - Matehuala	33.76	1	1	9076	1.9	25.4	5.6	6.8	2.8	46.4	4.1	6.0	1.0	27.3	5.6	67.1	0.067	0.599	22.312235	-100.805575
T. C. San Luis Potosí - Matehuala	33.76	1	2	9962	2.0	24.9	5.7	6.9	2.8	46.5	4.2	6.1	0.9	26.9	5.7	67.4	0.062	0.599	22.312287	-100.805741

33 CARR: Rayón - Ent. Tamuín (Cuota)

CLAVE:

RUTA: MEX-070D

AÑO: 2025

LUGAR	ESTACION				CLASIFICACION VEHICULAR EN PORCIENTO												COORDENADAS			
	KM	TE	SC	TDPA	M	A	B	C2	C3	T3S2	T3S3	T3S2R4	OTROS	A	B	C	K'	D	LATITUD	LONGITUD
Rayón	0.00																			
T. C. Rayón - Arroyo Seco	1.50	1	0	6430	4.0	72.3	5.7	3.6	2.1	5.7	1.8	3.8	1.0	76.3	5.7	18.0	0.080	0.556	21.861881	-99.631525
Plaza de Cobro Rayón	2.05	2	0	3703	0.6	66.0	3.9	4.3	3.3	9.2	4.3	7.8	0.6	66.6	3.9	29.5	0.090	0.500	21.863597	-99.623291
Vicente Guerrero	19.70	1	0	3672	4.9	63.6	6.8	4.4	3.1	7.8	2.8	5.6	1.0	68.5	6.8	24.7	0.090	0.536	21.865810	-99.498933
Vicente Guerrero	19.70	3	0	4371	5.6	63.1	6.2	5.2	3.9	6.9	3.5	4.8	0.8	68.7	6.2	25.1	0.080	0.572	21.864086	-99.478065
T. Izq. Tamasopo	34.50	3	0	4081	4.6	66.1	6.1	7.0	1.8	7.1	2.0	4.9	0.4	70.7	6.1	23.2	0.085	0.501	21.905869	-99.380063
Plaza de Cobro La Pitahaya	62.00	2	0	4114	0.8	67.7	3.6	3.9	3.7	7.9	4.8	7.0	0.6	68.5	3.6	27.9	0.090	0.500	21.967581	-99.174618
Ent. La Pitahaya	68.58	1	0	3739	8.0	60.3	8.3	4.7	2.0	7.6	3.4	5.0	0.7	68.3	8.3	23.4	0.079	0.565	22.003656	-99.132812
Ent. La Pitahaya	68.58	3	0	2279	6.3	53.7	9.8	3.8	2.5	12.1	4.0	6.9	0.9	60.0	9.8	30.2	0.074	0.651	21.992690	-99.105316
Plaza de Cobro La Calera	89.60	2	0	1469	0.3	43.4	1.0	3.3	3.4	21.7	7.3	16.8	2.8	43.7	1.0	55.3	0.090	0.500	21.904164	-98.955523
X. C. Cd. Valles - Tampico	107.33	1	0	2677	10.2	56.7	8.8	5.3	2.6	8.2	3.8	3.6	0.8	66.9	8.8	24.3	0.078	0.519	21.931409	-98.860535

SAN LUIS POTOSÍ

33 CARR: Rayón - Ent. Tamuín (Cuota)

CLAVE:

RUTA: MEX-070D

AÑO: 2025

LUGAR	ESTACION				CLASIFICACION VEHICULAR EN PORCIENTO														COORDENADAS	
	KM	TE	SC	TDPA	M	A	B	C2	C3	T3S2	T3S3	T3S2R4	OTROS	A	B	C	K'	D	LATITUD	LONGITUD
X. C. Tamuín - Xolol	112.53	1	0	3084	5.5	60.2	7.1	3.3	2.1	9.6	2.8	8.5	0.9	65.7	7.1	27.2	0.080	0.573	21.980634	-98.774029
X. C. Cd. Valles - Tampico	117.30	1	0	3092	6.3	56.0	7.6	3.7	2.7	9.6	4.1	9.1	0.9	62.3	7.6	30.1	0.078	0.517	21.997600	-98.734105

34 CARR: Charcas - Villa Santo Domingo

CLAVE: 24624

RUTA: SLP-017

AÑO: 2025

LUGAR	ESTACION				CLASIFICACION VEHICULAR EN PORCIENTO														COORDENADAS	
	KM	TE	SC	TDPA	M	A	B	C2	C3	T3S2	T3S3	T3S2R4	OTROS	A	B	C	K'	D	LATITUD	LONGITUD
Charcas	0.00	3	0	2383	32.6	54.4	3.8	4.7	3.5	0.6	0.2	0.2	0.0	87.0	3.8	9.2	0.139	0.699	23.137827	-101.130934
Villa Santo Domingo	75.00																			

35 CARR: Ébano - Estación Manuel

CLAVE: 24624

RUTA: SLP-TAM

AÑO: 2025

LUGAR	ESTACION				CLASIFICACION VEHICULAR EN PORCIENTO														COORDENADAS	
	KM	TE	SC	TDPA	M	A	B	C2	C3	T3S2	T3S3	T3S2R4	OTROS	A	B	C	K'	D	LATITUD	LONGITUD
Ébano	0.00	3	0	2764	18.2	72.7	0.3	1.5	2.3	3.3	0.2	1.3	0.2	90.9	0.3	8.8	0.077	0.509	22.233505	-98.366104
Lím. de Edos. Term. S. L. P. Ppia. Ver.	2.71																			
Lím. de Edos. Term. Ver. Ppia. S. L. P.	3.95																			
Lím. de Edos. Term. S. L. P. Ppia. Ver.	5.00																			
Lím. de Edos. Term. Ver. Ppia. Tamps.	25.00																			
Estación Manuel	65.60																			

36 CARR: Matehuala - La Paz

CLAVE: 24621

RUTA: SLP-020

AÑO: 2025

LUGAR	ESTACION				CLASIFICACION VEHICULAR EN PORCIENTO														COORDENADAS	
	KM	TE	SC	TDPA	M	A	B	C2	C3	T3S2	T3S3	T3S2R4	OTROS	A	B	C	K'	D	LATITUD	LONGITUD
Matehuala	0.00	3	1	3675	26.1	68.0	0.1	4.1	0.7	0.6	0.1	0.1	0.2	94.1	0.1	5.8	0.087	0.509	23.670107	-100.654091
Matehuala	0.00	3	2	3427	26.3	68.4	0.1	4.0	0.6	0.5	0.0	0.1	0.0	94.7	0.1	5.2	0.084	0.509	23.670091	-100.654159
La Paz	8.00	1	1	2480	30.4	62.7	0.2	5.0	0.9	0.2	0.2	0.2	0.2	93.1	0.2	6.7	0.082	0.709	23.680168	-100.701197
La Paz	8.00	1	2	2545	30.2	63.2	0.2	4.9	0.8	0.2	0.1	0.2	0.2	93.4	0.2	6.4	0.118	0.709	23.680107	-100.701186

37 CARR: Matehuala - La Poza

CLAVE: 00086

RUTA: SLP-029-NL-061

AÑO: 2025

LUGAR	ESTACION				CLASIFICACION VEHICULAR EN PORCIENTO														COORDENADAS	
	KM	TE	SC	TDPA	M	A	B	C2	C3	T3S2	T3S3	T3S2R4	OTROS	A	B	C	K'	D	LATITUD	LONGITUD
Matehuala	0.00	3	0	3960	14.2	76.9	1.5	3.2	2.6	0.8	0.5	0.3	0.0	91.1	1.5	7.4	0.091	0.568	23.666355	-100.600811

SAN LUIS POTOSÍ

37 CARR: Matehuala - La Poza

CLAVE: 00086

RUTA: SLP-029-NL-061

AÑO: 2025

LUGAR	ESTACION	CLASIFICACION VEHICULAR EN PORCIENTO												COORDENADAS								
		KM	TE	SC	TDPA	M	A	B	C2	C3	T3S2	T3S3	T3S2R4	OTROS	A	B	C	K'	D	LATITUD	LONGITUD	
Lim. Edos. Term. S. L. P. Ppia. N. L.	19.70																					
Lim. Edos. Term. N. L. Ppia. S. L. P.	19.90																					
Lim. Edos. Term. S. L. P. Ppia. N. L.	21.53																					
Doctor Arroyo	49.00	1	0	3482	6.9	82.7	1.5	5.2	1.9	0.9	0.4	0.4	0.1	89.6	1.5	8.9	0.081	0.564	23.688826	-100.216937		
La Ascención	131.00	1	0	1008	9.3	78.2	3.4	5.6	1.1	2.1	0.2	0.1	0.0	87.5	3.4	9.1	0.086	0.529	24.321570	-99.905787		

38 CARR: Periférico de San Luis Potosí

CLAVE: 24618

RUTA: SLP-032

AÑO: 2025

LUGAR	ESTACION	CLASIFICACION VEHICULAR EN PORCIENTO												COORDENADAS								
		KM	TE	SC	TDPA	M	A	B	C2	C3	T3S2	T3S3	T3S2R4	OTROS	A	B	C	K'	D	LATITUD	LONGITUD	
T. C. San Luis Potosí - Ent. Arcinas	0.00																					
X. C. Querétaro - San Luis Potosí (Central)	22.00	3	1	20638	7.9	74.8	1.8	7.1	2.5	3.6	1.2	0.6	0.5	82.7	1.8	15.5	0.080	0.558	22.153540	-100.914413		
X. C. Querétaro - San Luis Potosí (Lateral)	22.00	3	1	9078	6.6	72.0	2.5	6.9	3.0	4.5	1.8	2.1	0.6	78.6	2.5	18.9	0.083	0.558	22.153577	-100.914321		
X. C. Querétaro - San Luis Potosí (Central)	22.00	3	2	17842	7.7	74.8	1.6	7.2	2.8	3.5	1.3	0.5	0.6	82.5	1.6	15.9	0.086	0.558	22.153728	-100.914558		
X. C. Querétaro - San Luis Potosí (Lateral)	22.00	3	2	9066	6.9	71.8	2.6	6.7	2.9	4.6	2.0	2.0	0.5	78.7	2.6	18.7	0.070	0.558	22.153577	-100.914629		
X. C. San Luis Potosí - Cd. Valles	25.00	3	1	30155	7.6	80.9	1.3	4.9	1.5	2.0	0.6	1.0	0.2	88.5	1.3	10.2	0.071	0.525	22.166303	-100.915130		
X. C. San Luis Potosí - Cd. Valles	25.00	3	2	30183	7.8	79.8	1.5	5.1	1.7	2.2	0.5	1.1	0.3	87.6	1.5	10.9	0.066	0.525	22.166426	-100.915249		
X. C. San Luis Potosí - Matehuala	30.70	1	1	19136	7.2	75.3	1.5	7.3	2.6	3.4	1.2	1.0	0.5	82.5	1.5	16.0	0.074	0.542	22.196209	-100.920121		
X. C. San Luis Potosí - Matehuala	30.70	1	2	19184	7.6	75.2	1.4	7.1	2.7	3.6	1.0	1.0	0.4	82.8	1.4	15.8	0.066	0.542	22.194508	-100.920039		
T. C. San Luis Potosí - Ent. Arcinas	44.80																					

39 CARR: Ramal a Cerritos

CLAVE: 24615

RUTA: SLP-007

AÑO: 2025

LUGAR	ESTACION	CLASIFICACION VEHICULAR EN PORCIENTO												COORDENADAS							
		KM	TE	SC	TDPA	M	A	B	C2	C3	T3S2	T3S3	T3S2R4	OTROS	A	B	C	K'	D	LATITUD	LONGITUD
T. C. San Luis Potosí - Matehuala	0.00	3	0	500	3.7	66.4	4.5	19.7	2.0	3.4	0.3	0.0	0.0	70.1	4.5	25.4	0.106	0.547	22.612169	-100.546943	
Cerritos	37.00																				

40 CARR: Ramal a Pozo de Acuña

CLAVE: 24626

RUTA: SLP-009

AÑO: 2025

LUGAR	ESTACION	CLASIFICACION VEHICULAR EN PORCIENTO												COORDENADAS							
		KM	TE	SC	TDPA	M	A	B	C2	C3	T3S2	T3S3	T3S2R4	OTROS	A	B	C	K'	D	LATITUD	LONGITUD
T. C. San Luis Potosí - Matehuala	0.00	3	0	442	1.4	86.3	0.7	10.3	1.0	0.2	0.1	0.0	0.0	87.7	0.7	11.6	0.097	0.535	22.633570	-100.500339	
Pozo de Acuña	37.90																				

SAN LUIS POTOSÍ

41 CARR: Rayón - Arroyo Seco

CLAVE: 24008

RUTA: SLP-011

AÑO: 2025

LUGAR	ESTACION				CLASIFICACION VEHICULAR EN PORCIENTO										COORDENADAS					
	KM	TE	SC	TDPA	M	A	B	C2	C3	T3S2	T3S3	T3S2R4	OTROS	A	B	C	K'	D	LATITUD	LONGITUD
Rayón	0.00	3	0	1354	6.1	70.0	1.0	19.2	1.8	0.9	0.4	0.6	0.0	76.1	1.0	22.9	0.101	0.547	21.843496	-99.624870
Lagunillas	36.00	1	0	334	13.4	79.4	0.2	5.7	0.4	0.4	0.2	0.1	0.2	92.8	0.2	7.0	0.129	0.628	21.595118	-99.564718
Lim. De Edos. Term. S.L.P. Ppia Oro.	51.00																			
Arroyo Seco	57.00	1	0	725	7.5	90.3	0.3	0.6	0.3	0.3	0.7	0.0	0.0	97.8	0.3	1.9	0.106	0.515	21.553844	-99.681295

42 CARR: Santo Domingo - Cerro Gordo

CLAVE: 24614

RUTA: SLP-022

AÑO: 2025

LUGAR	ESTACION				CLASIFICACION VEHICULAR EN PORCIENTO										COORDENADAS					
	KM	TE	SC	TDPA	M	A	B	C2	C3	T3S2	T3S3	T3S2R4	OTROS	A	B	C	K'	D	LATITUD	LONGITUD
T. C. Cd. Valles - San Luis Potosí	0.00	3	0	5651	4.9	75.5	1.8	10.1	1.6	3.3	1.8	0.8	0.2	80.4	1.8	17.8	0.080	0.501	22.096122	-100.746145
T. C. Querétaro - San Luis Potosí	19.00	1	0	4474	8.8	71.8	1.5	11.6	2.4	1.6	1.2	1.0	0.1	80.6	1.5	17.9	0.094	0.586	21.976383	-100.818427

43 CARR: Tamuín - Estación F.F.C.C. Tamuín

CLAVE: 24022

RUTA: SLP-040

AÑO: 2025

LUGAR	ESTACION				CLASIFICACION VEHICULAR EN PORCIENTO										COORDENADAS					
	KM	TE	SC	TDPA	M	A	B	C2	C3	T3S2	T3S3	T3S2R4	OTROS	A	B	C	K'	D	LATITUD	LONGITUD
Tamuín	0.00	3	0	5563	15.2	73.8	2.2	5.3	2.2	0.9	0.1	0.3	0.0	89.0	2.2	8.8	0.081	0.587	22.009642	-98.782498
Estación F.F.C.C. Tamuín	10.00	1	0	1550	49.0	46.2	0.4	1.0	1.9	0.9	0.2	0.4	0.0	95.2	0.4	4.4	0.087	0.541	22.078361	-98.811398

44 CARR: Tamuín - Xolol

CLAVE: 24027

RUTA: SLP-014

AÑO: 2025

LUGAR	ESTACION				CLASIFICACION VEHICULAR EN PORCIENTO										COORDENADAS					
	KM	TE	SC	TDPA	M	A	B	C2	C3	T3S2	T3S3	T3S2R4	OTROS	A	B	C	K'	D	LATITUD	LONGITUD
Tamuín	0.00	3	0	4136	15.3	67.5	2.0	7.5	2.3	2.8	1.3	1.1	0.2	82.8	2.0	15.2	0.079	0.512	21.998843	-98.762960
X. C. Rayón - Ent. Tamuín (Cuota)	2.56	3	0	3191	17.4	65.7	3.0	4.7	2.5	3.8	1.3	1.4	0.2	83.1	3.0	13.9	0.092	0.503	21.977785	-98.756276
San Vicente Tancuayalab	37.62																			
Xolol	97.00																			

45 CARR: Cerritos - Ent. Tula (Cuota)

CLAVE:

RUTA: SLP-075D

AÑO: 2025

LUGAR	ESTACION				CLASIFICACION VEHICULAR EN PORCIENTO										COORDENADAS					
	KM	TE	SC	TDPA	M	A	B	C2	C3	T3S2	T3S3	T3S2R4	OTROS	A	B	C	K'	D	LATITUD	LONGITUD
T. C. Rioverde - Cerritos (Cuota)	0.00	3	0	3193	3.9	75.0	4.1	3.6	2.4	3.8	2.0	4.4	0.8	78.9	4.1	17.0	0.077	0.571	22.455286	-100.314633
T. Der. Cerritos	2.69	3	0	2358	3.8	68.3	6.2	3.7	2.9	7.1	2.6	4.8	0.6	72.1	6.2	21.7	0.073	0.514	22.465562	-100.309769
T. Der. San José	18.70	3	0	2695	2.4	75.4	2.9	3.8	1.7	8.1	1.1	3.8	0.8	77.8	2.9	19.3	0.104	0.629	22.581352	-100.213863

SAN LUIS POTOSÍ

45 CARR: Cerritos - Ent. Tula (Cuota)

CLAVE:

RUTA: SLP-075D

AÑO: 2025

LUGAR	ESTACION				CLASIFICACION VEHICULAR EN PORCIENTO													COORDENADAS		
	KM	TE	SC	TDPA	M	A	B	C2	C3	T3S2	T3S3	T3S2R4	OTROS	A	B	C	K'	D	LATITUD	LONGITUD
T. Der. Buenavista	32.15	3	0	2242	3.5	64.8	5.1	3.4	1.8	11.8	2.9	5.8	0.9	68.3	5.1	26.6	0.098	0.691	22.635031	-100.103143
T. C. Antiguo Morelos-Ent. El Huizache	51.20																			

46 CARR: Rioverde - Cerritos (Cuota)

CLAVE: 00138

RUTA: SLP-D

AÑO: 2025

LUGAR	ESTACION				CLASIFICACION VEHICULAR EN PORCIENTO													COORDENADAS		
	KM	TE	SC	TDPA	M	A	B	C2	C3	T3S2	T3S3	T3S2R4	OTROS	A	B	C	K'	D	LATITUD	LONGITUD
Río Verde	0.00	3	0	6588	3.0	69.3	6.1	4.6	4.1	4.8	2.4	4.8	0.9	72.3	6.1	21.6	0.084	0.523	21.924403	-99.959168
Villa Juárez	56.53	1	0	4316	3.7	69.0	6.0	4.9	2.8	6.4	2.8	3.6	0.8	72.7	6.0	21.3	0.093	0.563	22.315108	-100.282503
Cerritos	103.00	1	0	6829	2.5	59.7	6.2	6.7	2.3	9.2	5.1	7.3	1.0	62.2	6.2	31.6	0.071	0.509	22.586107	-100.581102

47 CARR: San Luis Potosí - Villa de Arriaga (Cuota)

CLAVE: 24209

RUTA: SLP-D

AÑO: 2025

LUGAR	ESTACION				CLASIFICACION VEHICULAR EN PORCIENTO													COORDENADAS		
	KM	TE	SC	TDPA	M	A	B	C2	C3	T3S2	T3S3	T3S2R4	OTROS	A	B	C	K'	D	LATITUD	LONGITUD
T. C. Querétaro - San Luis Potosí	0.00	3	0	11787	2.3	63.5	2.3	4.5	2.9	18.5	1.7	3.4	0.9	65.8	2.3	31.9	0.098	0.721	22.003301	-100.851110
Villa de Arriaga	77.00	1	0	3958	2.7	40.4	5.2	7.1	3.0	25.9	3.7	11.1	0.9	43.1	5.2	51.7	0.066	0.555	21.892731	-101.387339

48 CARR: Rayón - Cd. del Maíz

CLAVE: 24206

RUTA: MEX-070-SLP-005

AÑO: 2025

LUGAR	ESTACION				CLASIFICACION VEHICULAR EN PORCIENTO													COORDENADAS		
	KM	TE	SC	TDPA	M	A	B	C2	C3	T3S2	T3S3	T3S2R4	OTROS	A	B	C	K'	D	LATITUD	LONGITUD
T. C. (Cd. Valles - San Luis Potosí)	0.00																			
Cárdenas	15.80	1	0	3208	4.4	86.5	1.9	3.6	1.6	1.0	0.6	0.3	0.1	90.9	1.9	7.2	0.091	0.570	21.983624	-99.647674
Cd. del Maíz	55.70	1	0	1088	5.2	87.0	1.5	3.8	1.6	0.6	0.2	0.1	0.0	92.2	1.5	6.3	0.088	0.573	22.395316	-99.612588

49 CARR: San Lorenzo - Moctezuma

CLAVE: 24016

RUTA: MEX-063-SLP-012

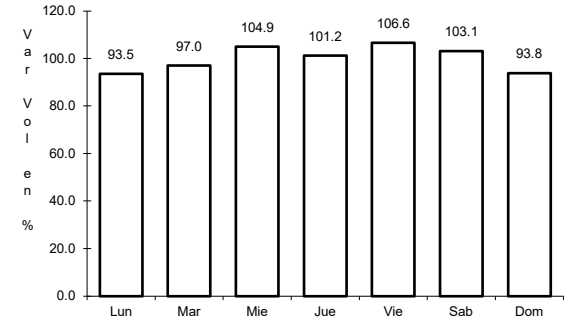
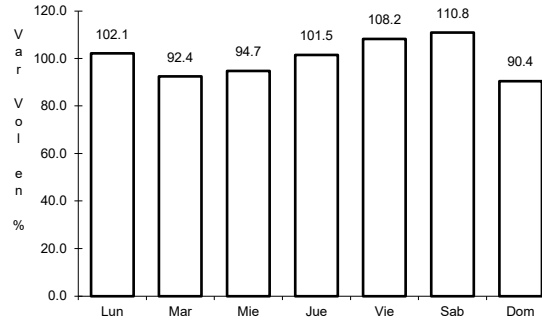
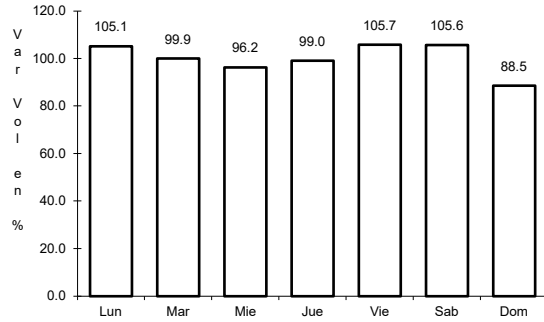
AÑO: 2025

LUGAR	ESTACION				CLASIFICACION VEHICULAR EN PORCIENTO													COORDENADAS		
	KM	TE	SC	TDPA	M	A	B	C2	C3	T3S2	T3S3	T3S2R4	OTROS	A	B	C	K'	D	LATITUD	LONGITUD
T. C. San Luis Potosí - Matehuala	0.00	3	0	1594	6.0	73.4	3.5	5.1	4.5	4.1	2.8	0.6	0.0	79.4	3.5	17.1	0.092	0.541	22.567935	-100.639247
Estación Moctezuma	49.00																			
Moctezuma	54.00	1	0	2392	12.1	77.5	1.7	4.6	1.8	0.6	0.7	0.6	0.4	89.6	1.7	8.7	0.080	0.568	22.758238	-101.065870

1 CARR: Carbonera - T. C. (Ent. Morelos - Saltillo)

CLAVE: 00218

RUTA: MEX-062



Km: 0.00

Tipo: 3

Sent: 0

Km: 18.00

Tipo: 1

Sent: 0

Km: 112.00

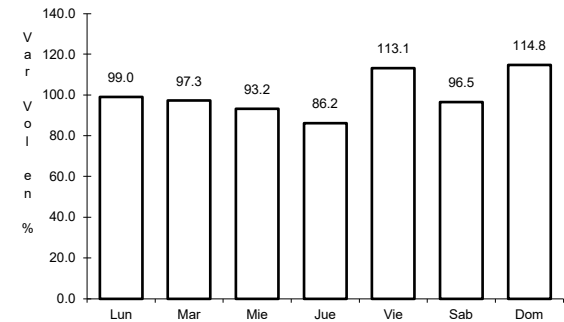
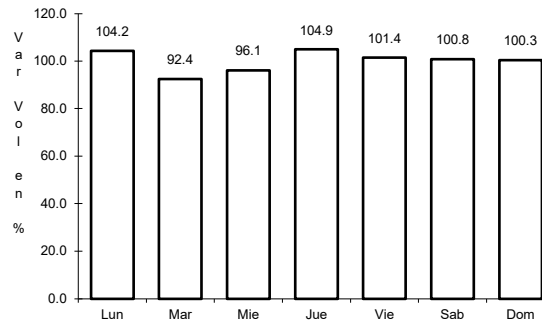
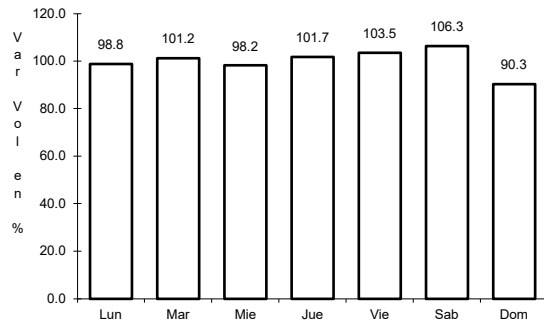
Tipo: 1

Sent: 0

2 CARR: Cd. Valles - Cd. Victoria

CLAVE: 00509

RUTA: MEX-085



Km: 0.00

Tipo: 3

Sent: 0

Km: 110.00

Tipo: 3

Sent: 0

Km: 232.00

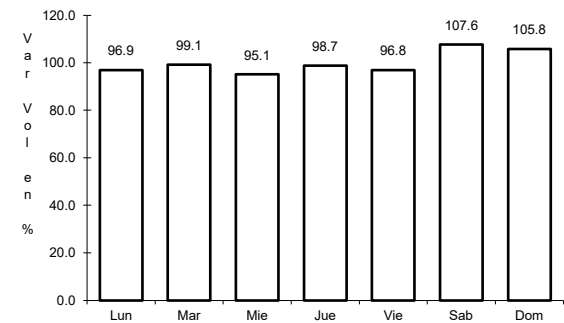
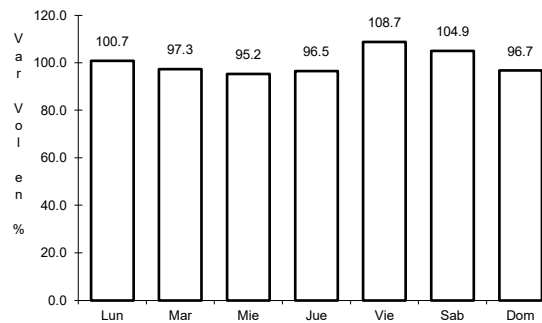
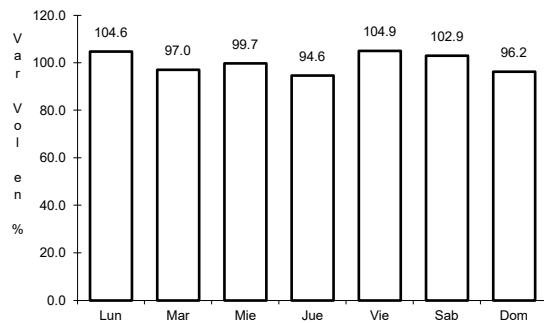
Tipo: 1

Sent: 0

3 CARR: Cd. Valles - San Luis Potosí

CLAVE: 24135

RUTA: MEX-070



Km: 0.00

Tipo: 3

Sent: 1

Km: 0.00

Tipo: 3

Sent: 2

Km: 145.90

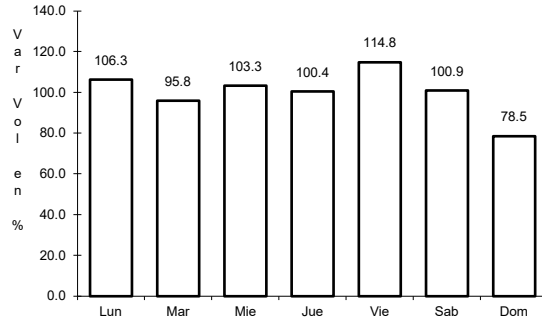
Tipo: 1

Sent: 0

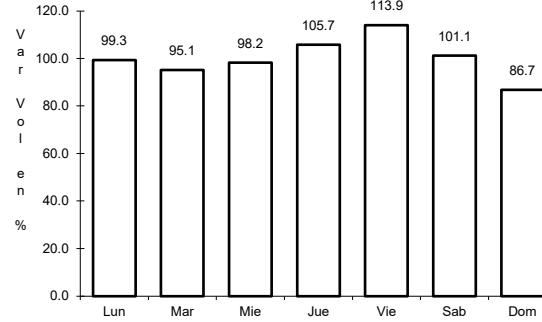
4 CARR: Cd. Valles - Tampico

CLAVE: 00138

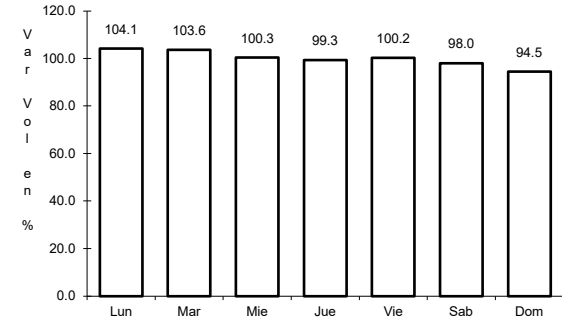
ruta: MEX-070



Km: 0.00                      Tipo: 3                      Sent: 0



Km: 138.00                      Tipo: 1                      Sent: 1

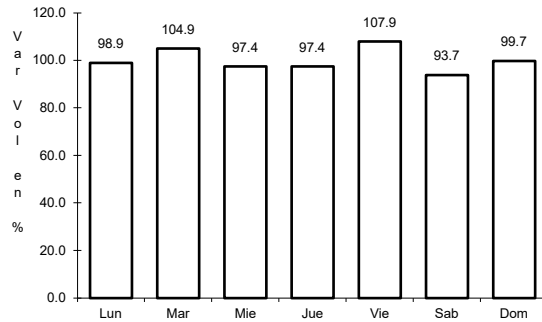


Km: 138.00                      Tipo: 1                      Sent: 2

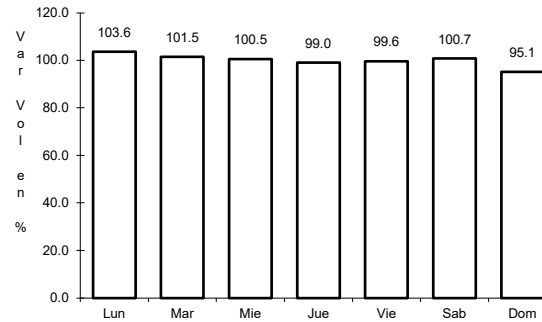
5 CARR: El Clarín - Agua Buena

CLAVE: 24283

ruta: MEX-070



Km: 0.00                      Tipo: 3                      Sent: 0

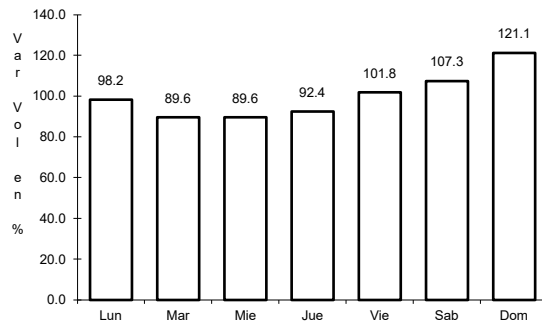


Km: 11.23                      Tipo: 1                      Sent: 0

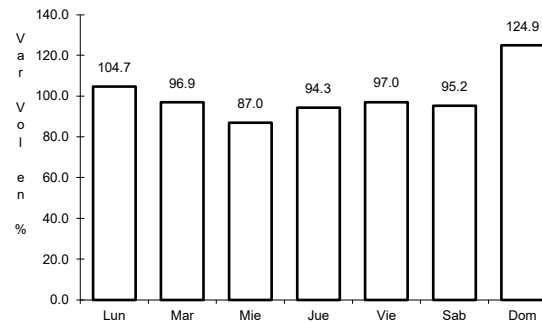
6 CARR: Ent. Ahualulco - Ent. La Bonita

CLAVE: 24258

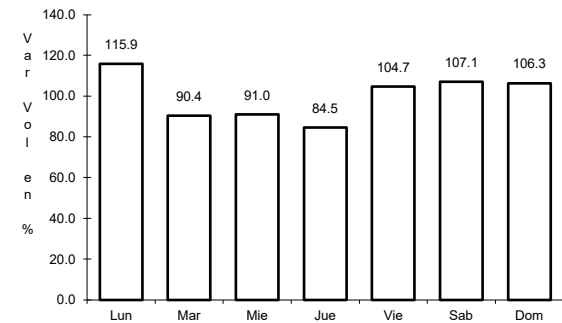
ruta: MEX-063



Km: 0.00                      Tipo: 3                      Sent: 0



Km: 59.00                      Tipo: 1                      Sent: 0

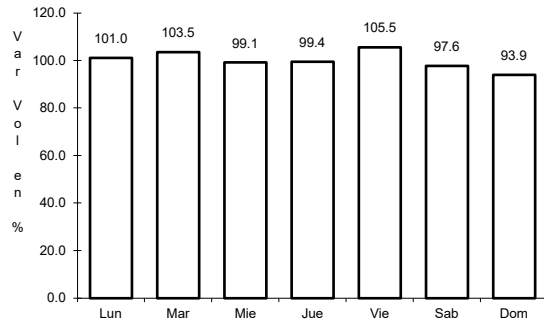


Km: 169.90                      Tipo: 1                      Sent: 0

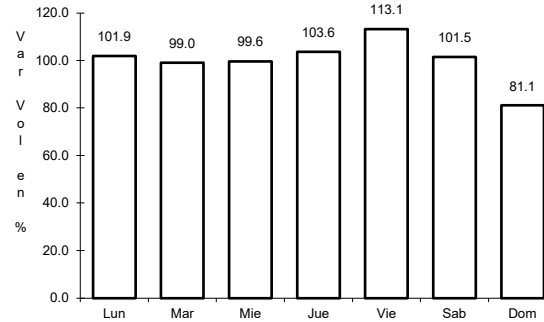
7 CARR: Ent. de Zaragoza - San Felipe

CLAVE: 00240

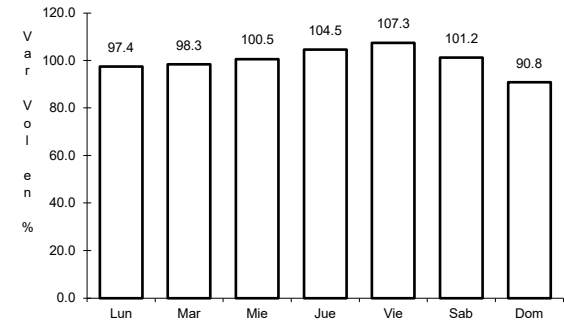
ruta: MEX-037



Km: 0.00      Tipo: 3      Sent: 0



Km: 39.00      Tipo: 3      Sent: 0

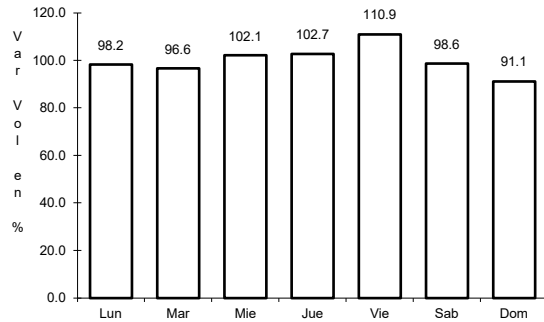


Km: 72.00      Tipo: 1      Sent: 0

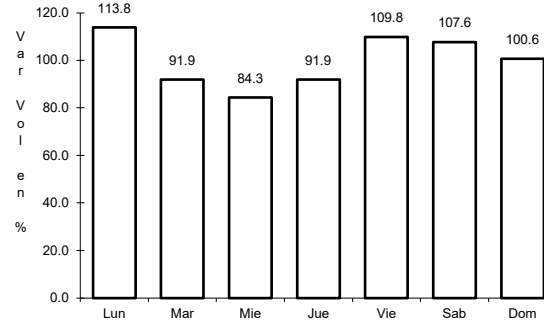
8 CARR: Ent. El Huizache - Antigua Morelos

CLAVE: 00136

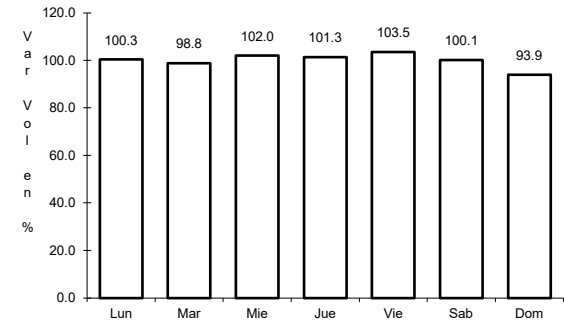
ruta: MEX-080



Km: 0.00      Tipo: 3      Sent: 0



Km: 112.00      Tipo: 1      Sent: 0

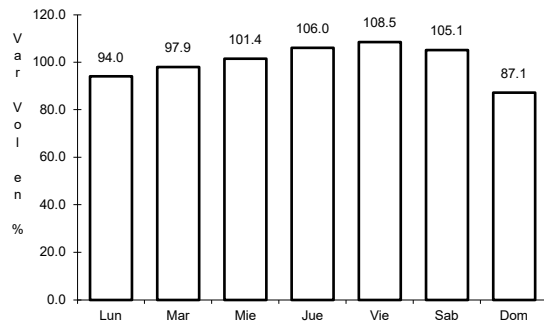


Km: 198.00      Tipo: 1      Sent: 0

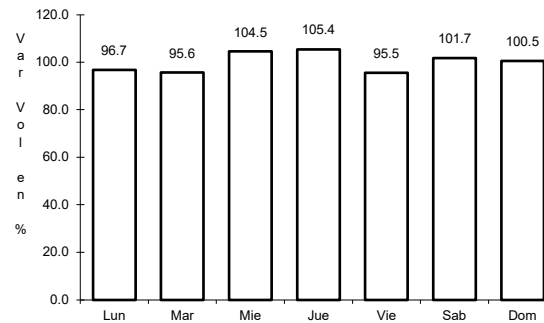
9 CARR: Ent. Tula - Cd. Victoria

CLAVE: 00179

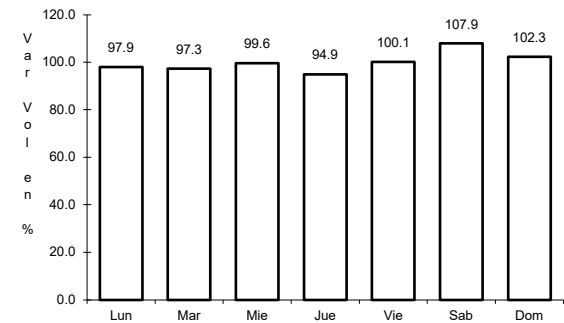
ruta: MEX-101



Km: 0.00      Tipo: 3      Sent: 0



Km: 180.00      Tipo: 1      Sent: 1

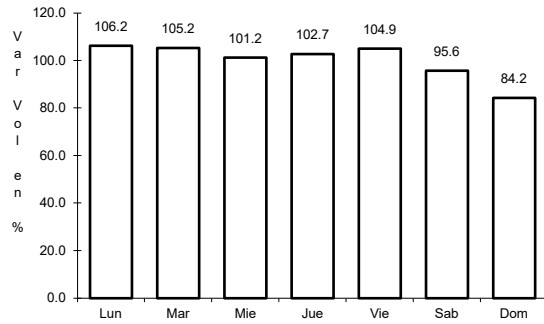


Km: 180.00      Tipo: 1      Sent: 2

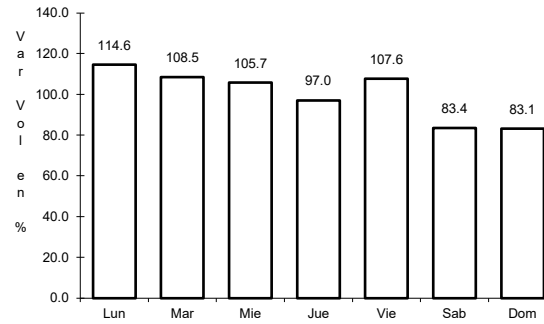
10 CARR: Jalpan de Serra - Rioverde

CLAVE: 00265

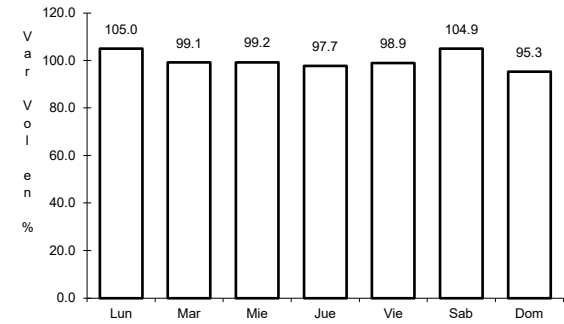
ruta: MEX-069



Km: 0.00                      Tipo: 3                      Sent: 0



Km: 48.60                      Tipo: 1                      Sent: 0

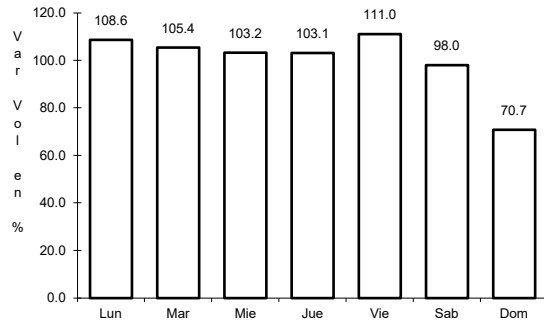


Km: 105.43                      Tipo: 1                      Sent: 0

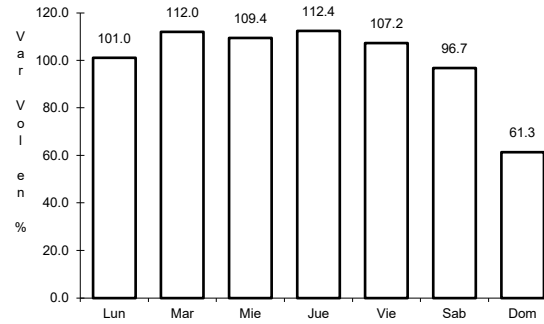
11 CARR: Libramiento de Cd. Valles

CLAVE: 24205

ruta: MEX-070



Km: 0.00                      Tipo: 3                      Sent: 0

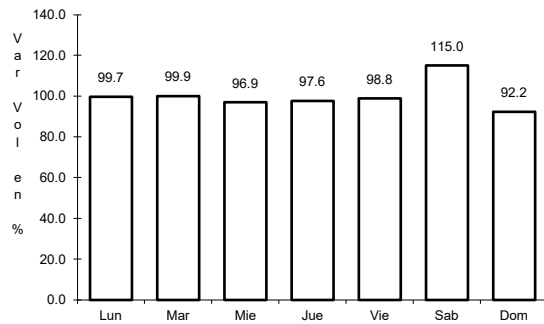


Km: 11.54                      Tipo: 1                      Sent: 0

12 CARR: Libramiento de Villa de Reyes

CLAVE: 24010

ruta: MEX-037

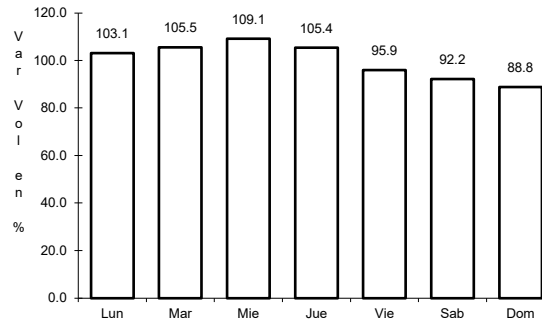
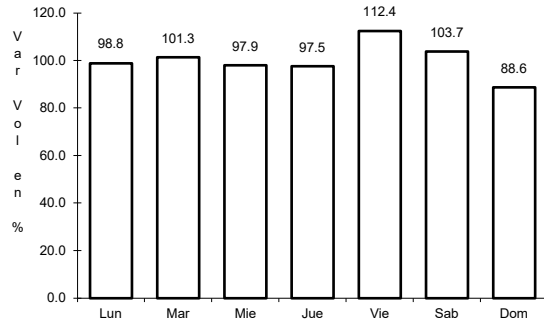


Km: 0.00                      Tipo: 3                      Sent: 0

13 CARR: Libramiento de Villa de Reyes (Poniente)

CLAVE:

ruta: MEX-037



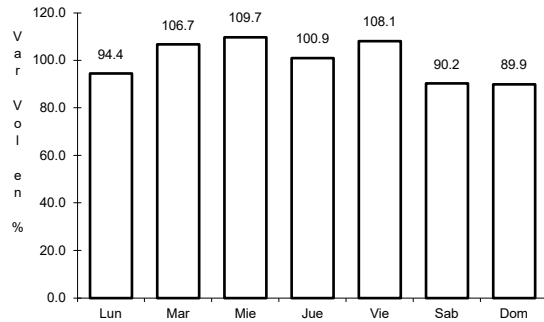
Km: 125.60      Tipo: 3      Sent: 0

Km: 143.64      Tipo: 1      Sent: 0

14 CARR: Libramiento Villa de Arriaga

CLAVE: 24009

ruta: MEX-080

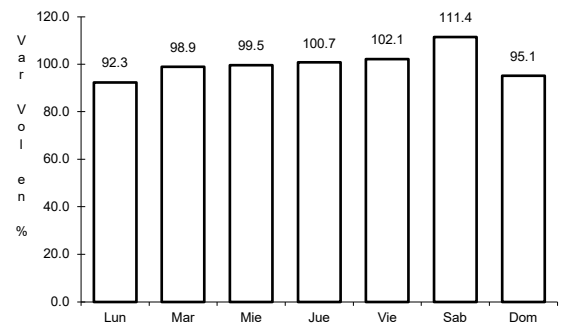
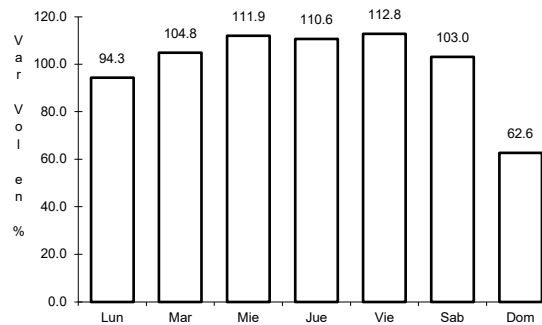
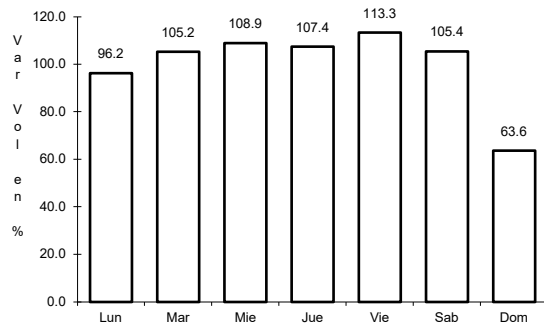


Km: 0.00      Tipo: 3      Sent: 0

15 CARR: Matchuala - Ent. Puerto México

CLAVE: 00405

ruta: MEX-057



Km: 0.00      Tipo: 3      Sent: 1

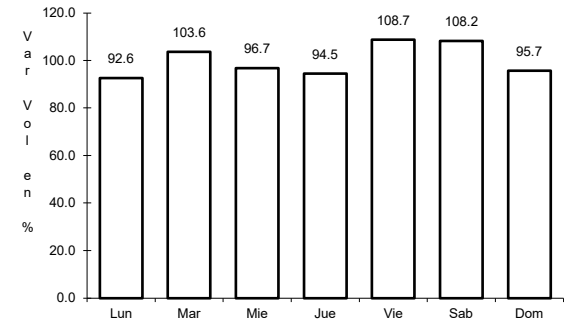
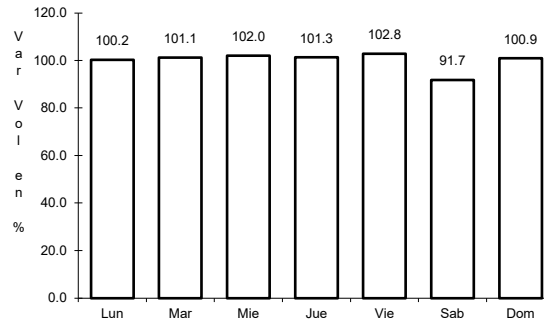
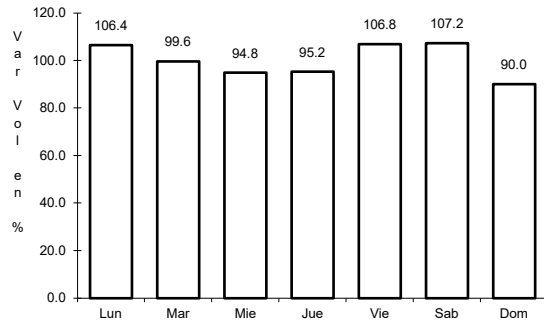
Km: 0.00      Tipo: 3      Sent: 2

Km: 177.18      Tipo: 1      Sent: 1

16 CARR: Portezuelo - Cd. Valles

CLAVE: 00023

ruta: MEX-085



Km: 81.37      Tipo: 3      Sent: 0

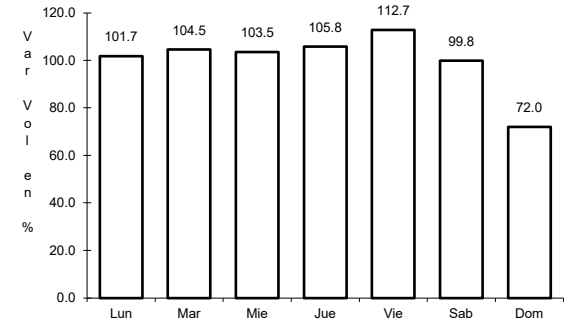
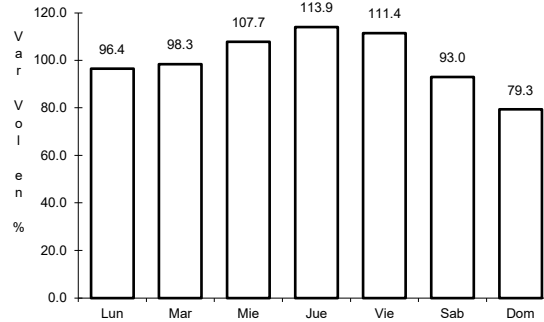
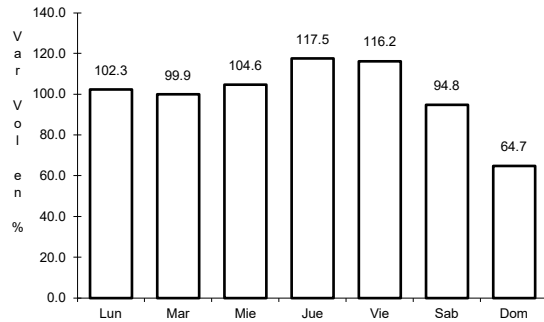
Km: 236.00      Tipo: 3      Sent: 0

Km: 368.00      Tipo: 1      Sent: 1

17 CARR: Querétaro - San Luis Potosí

CLAVE: 00165

ruta: MEX-057



Km: 6.28      Tipo: 3      Sent: 1

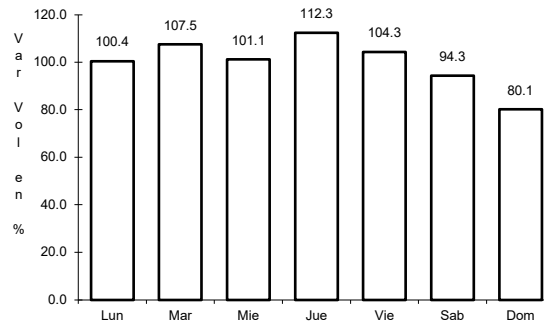
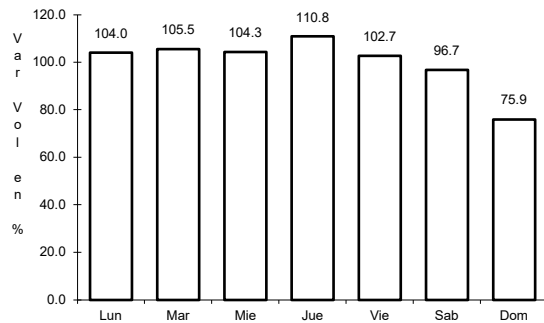
Km: 6.28      Tipo: 3      Sent: 2

Km: 184.80      Tipo: 1      Sent: 1

18 CARR: Ramal a Aeropuerto de S. L. P.

CLAVE: 24206

ruta: MEX-057



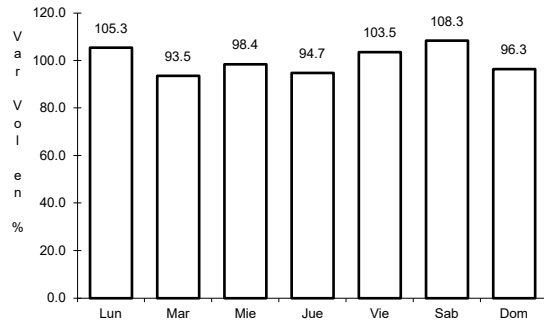
Km: 0.00      Tipo: 3      Sent: 1

Km: 0.00      Tipo: 3      Sent: 2

19 CARR: Ramal a Ojo de Agua

CLAVE: 24023

ruta: MEX-062



Km: 0.00

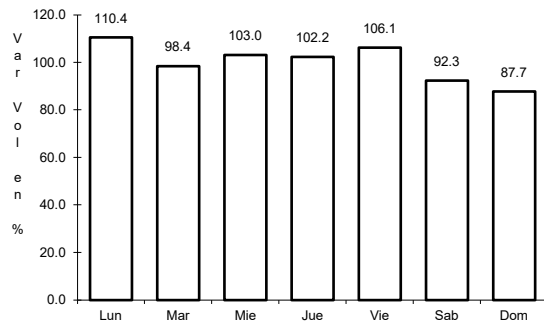
Tipo: 3

Sent: 0

20 CARR: Ramal a Rayón

CLAVE: 24626

ruta: MEX-070



Km: 1.50

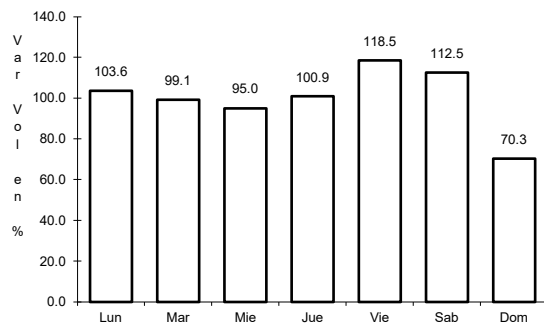
Tipo: 1

Sent: 0

21 CARR: San Juan del Río - Xilitla

CLAVE: 00183

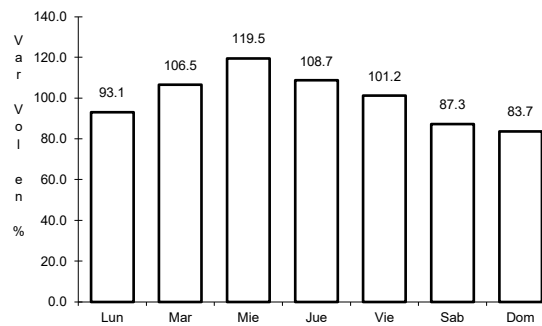
ruta: MEX-120



Km: 5.20

Tipo: 3

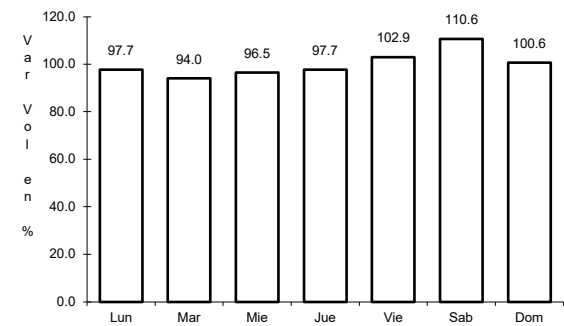
Sent: 1



Km: 5.20

Tipo: 3

Sent: 2



Km: 276.98

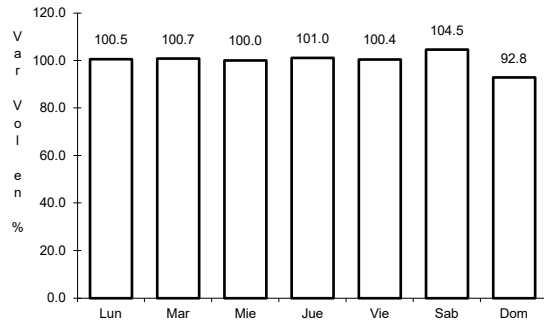
Tipo: 1

Sent: 0

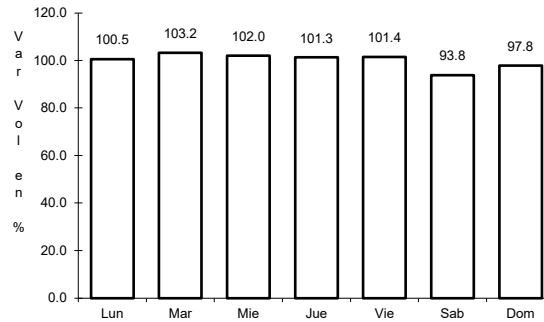
22 CARR: San Luis Potosí - Ent. Arcinas

CLAVE: 00134

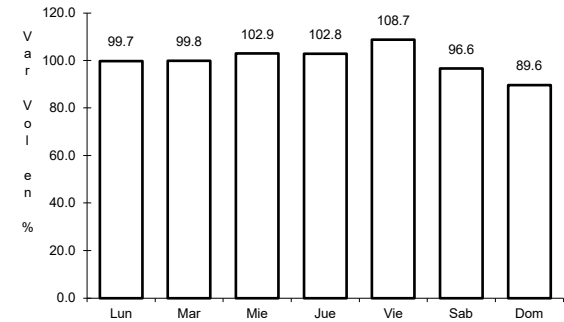
ruta: MEX-049



Km: 9.35      Tipo: 3      Sent: 1



Km: 9.35      Tipo: 3      Sent: 2

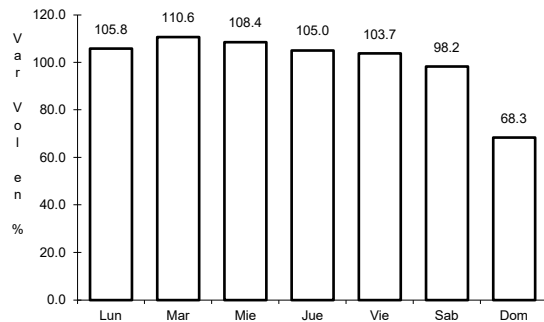


Km: 162.98      Tipo: 1      Sent: 1

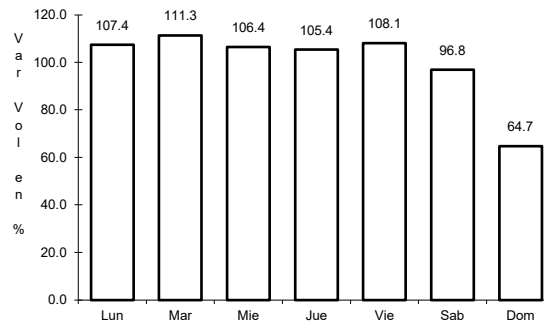
23 CARR: San Luis Potosí - Lagos de Moreno

CLAVE: 00133

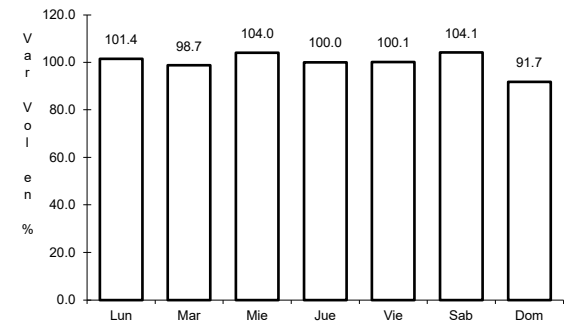
ruta: MEX-070-080



Km: 0.00      Tipo: 3      Sent: 1



Km: 0.00      Tipo: 3      Sent: 2

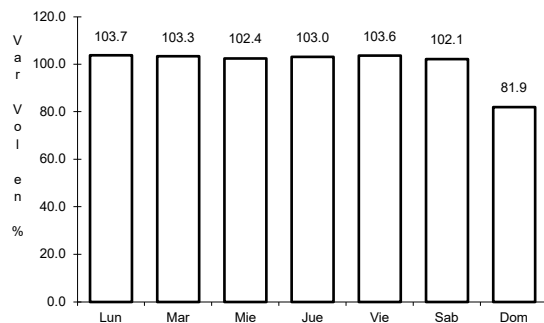


Km: 61.90      Tipo: 3      Sent: 0

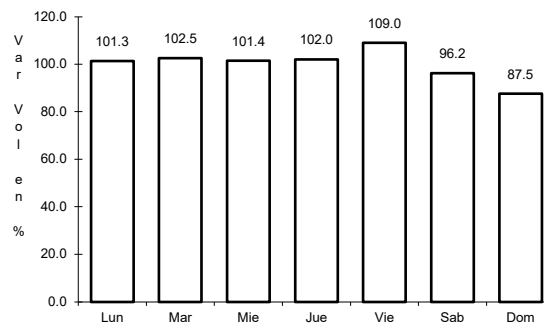
24 CARR: San Luis Potosí - Matehuala

CLAVE: 24508

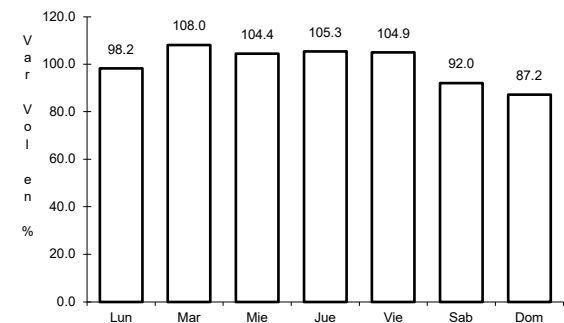
ruta: MEX-057



Km: 7.36      Tipo: 3      Sent: 1



Km: 7.36      Tipo: 3      Sent: 2

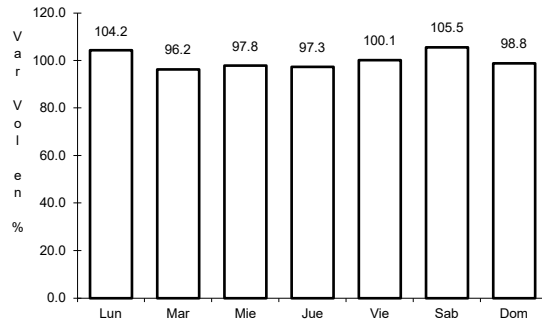


Km: 187.39      Tipo: 1      Sent: 1

25 CARR: T. C. (Ent. El Huizache- Ant. Morelos)-El Salto

CLAVE: 24204

RUTA: MEX-080



Km: 0.00

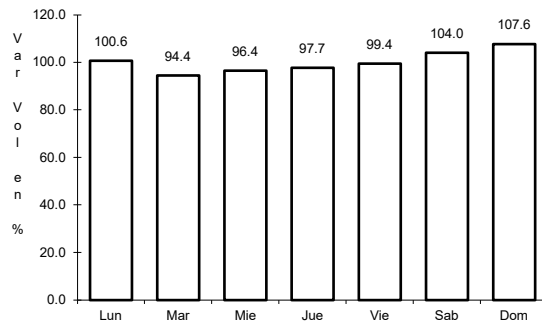
Tipo: 3

Sent: 0

26 CARR: T. C. (Qro - S.L.P.) - Tierra Nueva

CLAVE: 24203

RUTA: MEX-057



Km: 0.00

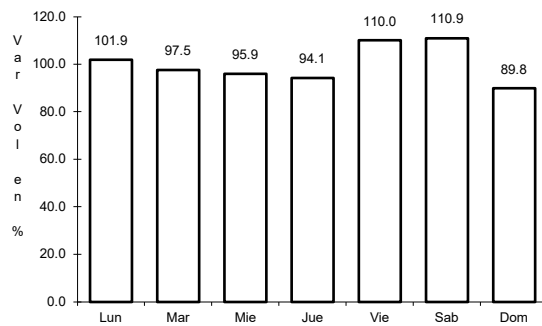
Tipo: 3

Sent: 0

27 CARR: T. C. (S.L.P. - Matchuala) - Villa Hidalgo

CLAVE: 24619

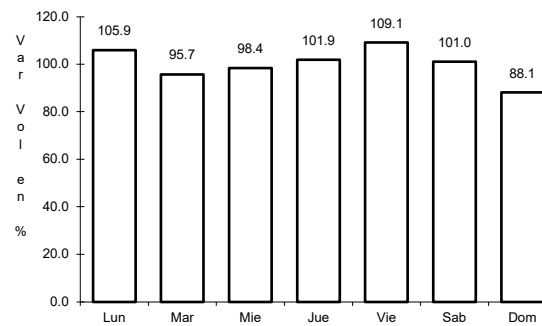
RUTA: MEX-057



Km: 42.00

Tipo: 3

Sent: 0



Km: 52.47

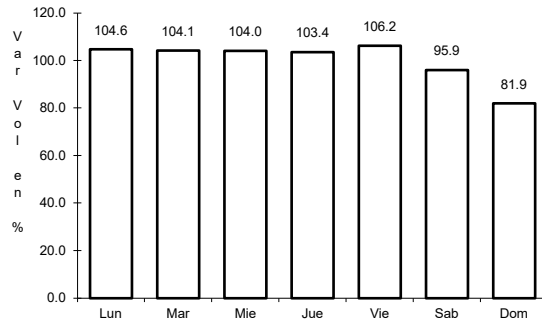
Tipo: 1

Sent: 0

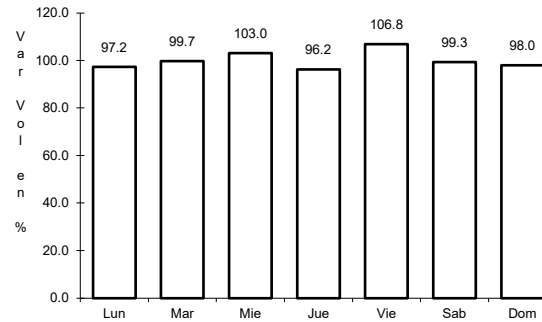
28 CARR: Tamazunchale - San Felipe Orizatlán

CLAVE: 00609

ruta: MEX-085



Km: 0.00      Tipo: 3      Sent: 0

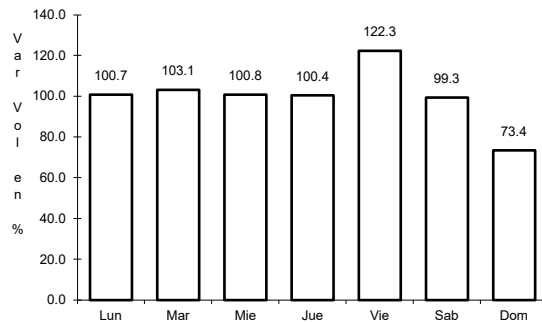


Km: 27.10      Tipo: 1      Sent: 0

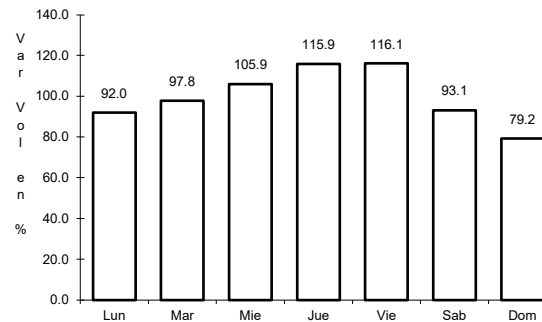
29 CARR: Lagos de Moreno - Villa de Arriaga (Cuota)

CLAVE:

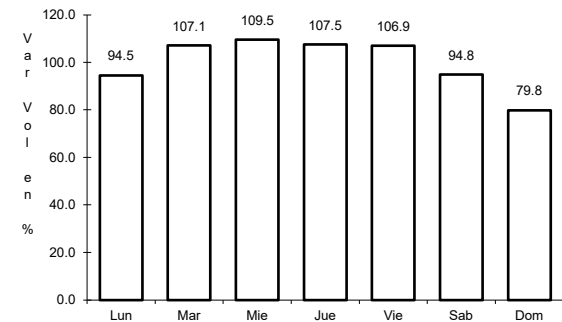
ruta: MEX-080D



Km: 12.10      Tipo: 3      Sent: 0



Km: 58.18      Tipo: 1      Sent: 0

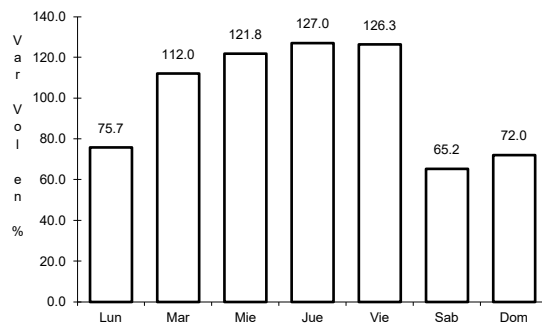


Km: 78.00      Tipo: 1      Sent: 0

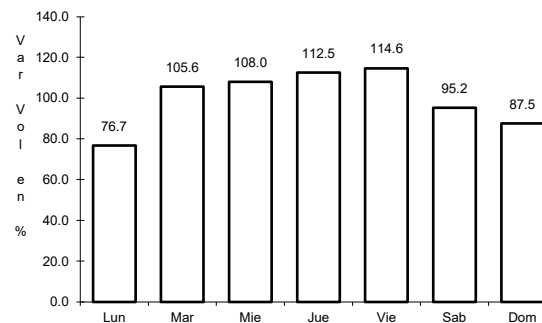
30 CARR: Libramiento de Matchuala (Cuota)

CLAVE: 24205

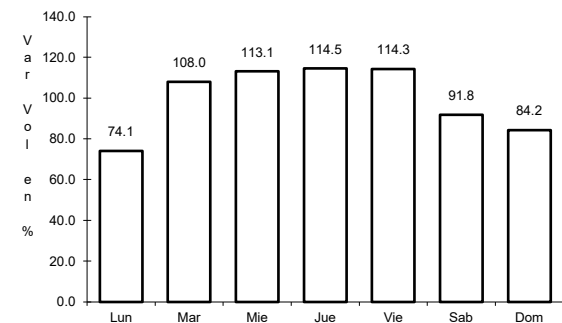
ruta: MEX-057D



Km: 0.00      Tipo: 3      Sent: 1



Km: 0.00      Tipo: 3      Sent: 2

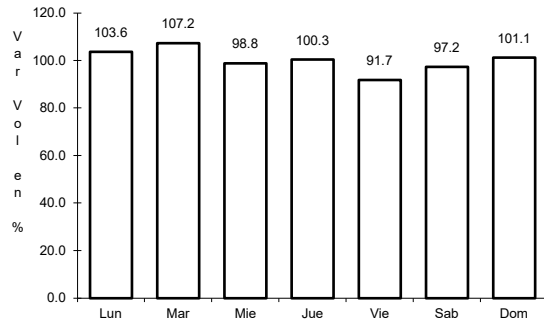


Km: 14.20      Tipo: 1      Sent: 1

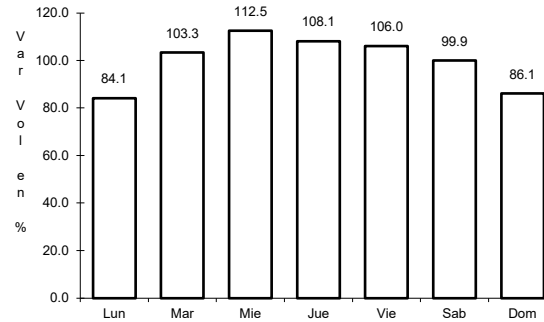
31 CARR: Libramiento Norponiente de San Luis Potosí (Cuota)

CLAVE:

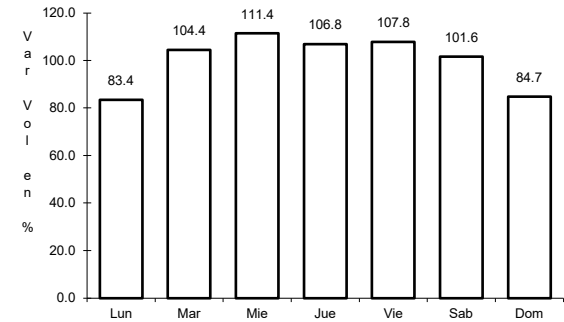
RUTA: MEX-057D



Km: 5.60      Tipo: 1      Sent: 0



Km: 5.60      Tipo: 3      Sent: 0

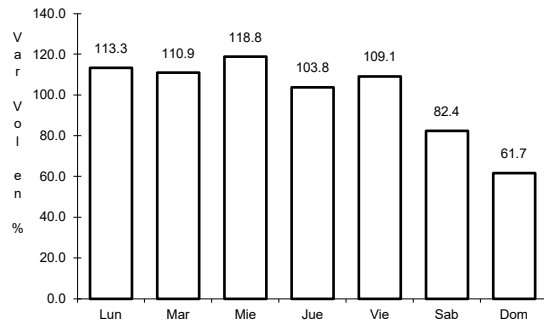


Km: 31.20      Tipo: 3      Sent: 0

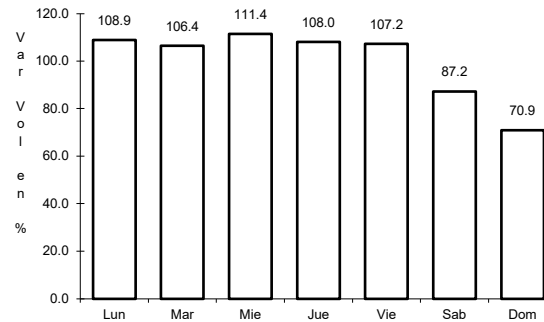
32 CARR: Libramiento Oriente de San Luis Potosí (Cuota)

CLAVE: 24009

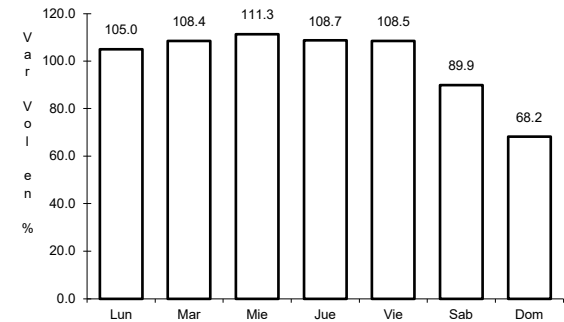
RUTA: MEX-057D



Km: 11.00      Tipo: 1      Sent: 1



Km: 11.00      Tipo: 1      Sent: 2

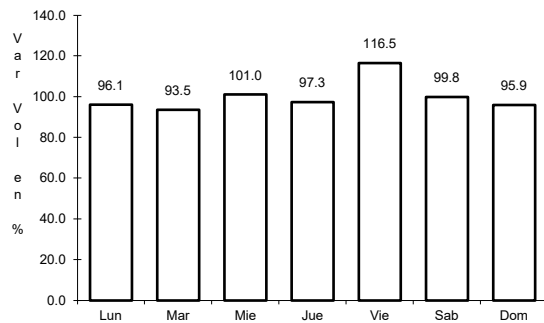


Km: 33.76      Tipo: 1      Sent: 1

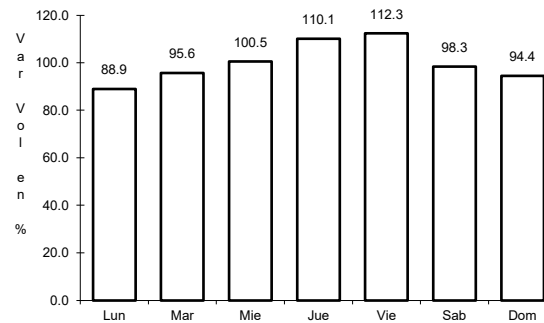
33 CARR: Rayón - Ent. Tamián (Cuota)

CLAVE:

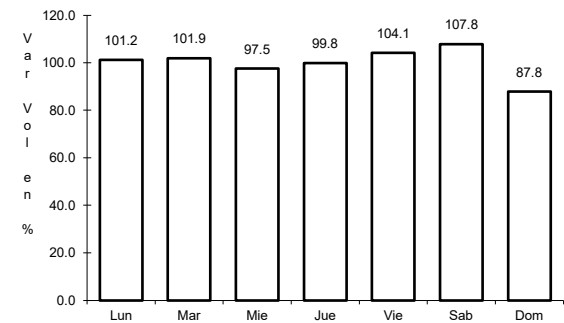
RUTA: MEX-070D



Km: 19.70      Tipo: 1      Sent: 0



Km: 68.58      Tipo: 3      Sent: 0

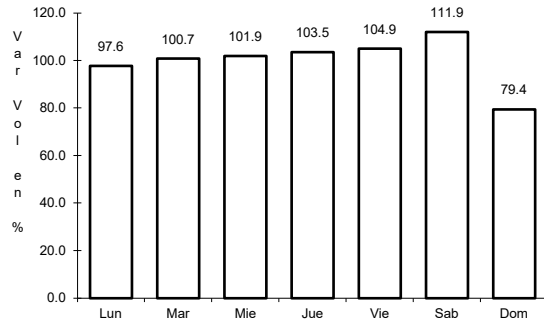


Km: 117.30      Tipo: 1      Sent: 0

34 CARR: Charcas - Villa Santo Domingo

CLAVE: 24624

RUTA: SLP-017



Km: 0.00

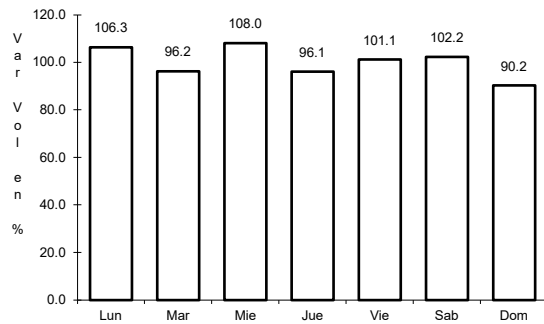
Tipo: 3

Sent: 0

35 CARR: Ébano - Estación Manuel

CLAVE: 24624

RUTA: SLP-TAM



Km: 0.00

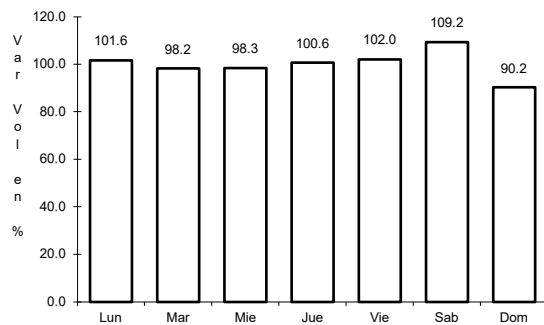
Tipo: 3

Sent: 0

36 CARR: Matchuala - La Paz

CLAVE: 24621

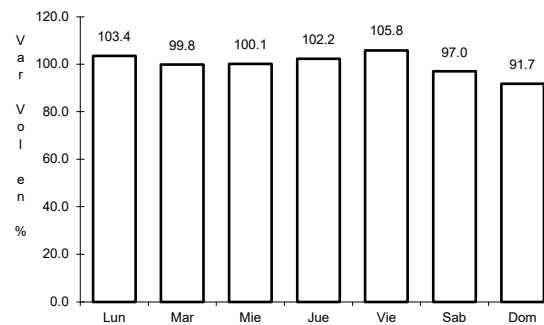
RUTA: SLP-020



Km: 0.00

Tipo: 3

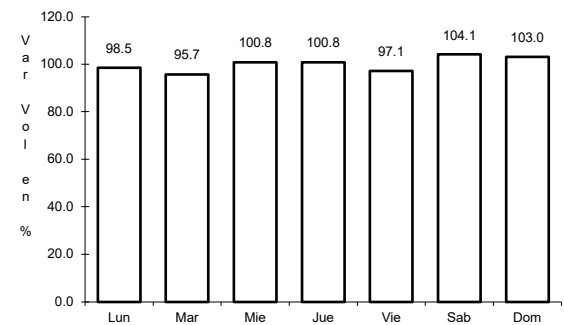
Sent: 1



Km: 0.00

Tipo: 3

Sent: 2



Km: 8.00

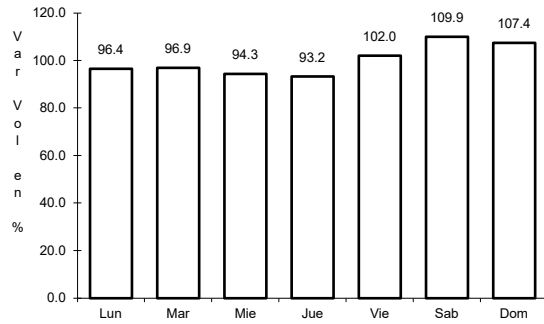
Tipo: 1

Sent: 1

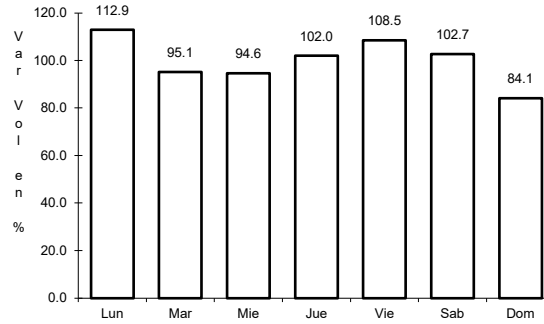
37 CARR: Matchuala - La Poza

CLAVE: 00086

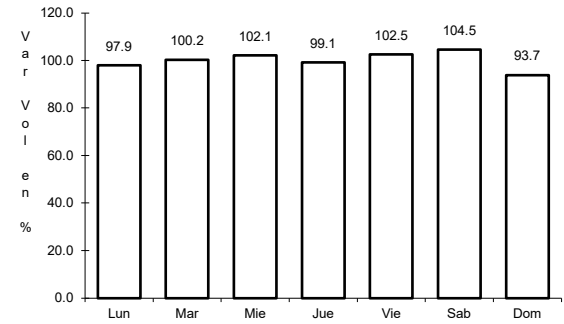
RUTA: SLP-029-NL-061



Km: 0.00                      Tipo: 3                      Sent: 0



Km: 49.00                      Tipo: 1                      Sent: 0

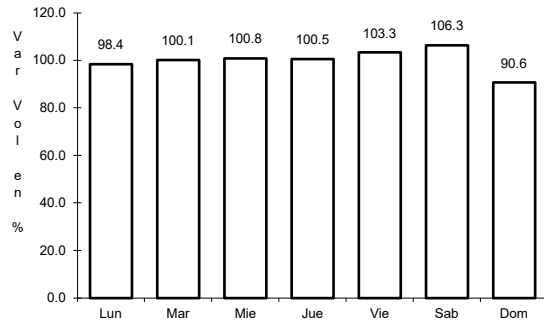


Km: 131.00                      Tipo: 1                      Sent: 0

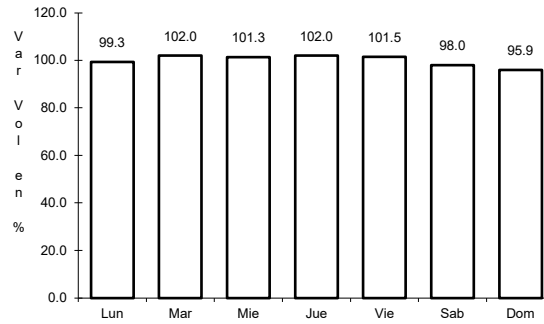
38 CARR: Periférico de San Luis Potosí

CLAVE: 24618

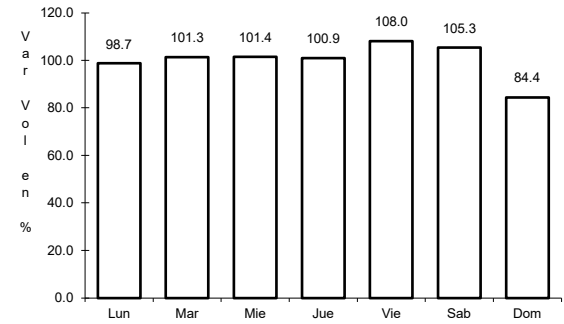
RUTA: SLP-032



Km: 22.00                      Tipo: 3                      Sent: 1



Km: 22.00                      Tipo: 3                      Sent: 2

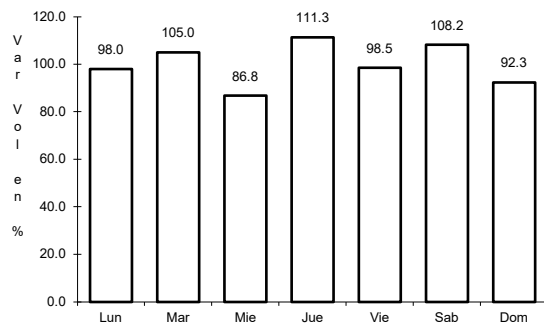


Km: 30.70                      Tipo: 1                      Sent: 1

39 CARR: Ramal a Cerritos

CLAVE: 24615

RUTA: SLP-007

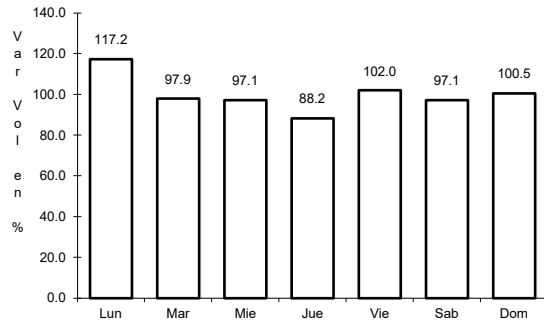


Km: 0.00                      Tipo: 3                      Sent: 0

40 CARR: Ramal a Pozo de Acuña

CLAVE: 24626

ruta: SLP-009



Km: 0.00

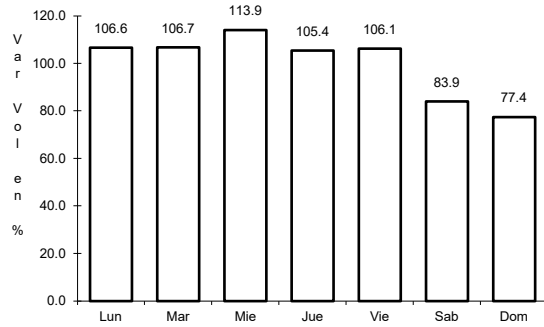
Tipo: 3

Sent: 0

41 CARR: Rayón - Arroyo Seco

CLAVE: 24008

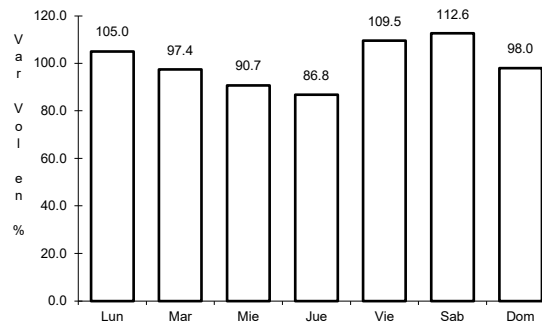
ruta: SLP-011



Km: 0.00

Tipo: 3

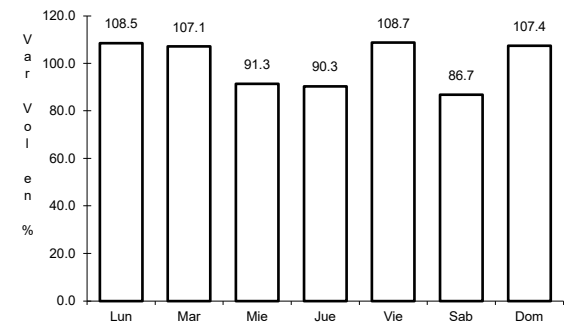
Sent: 0



Km: 36.00

Tipo: 1

Sent: 0



Km: 57.00

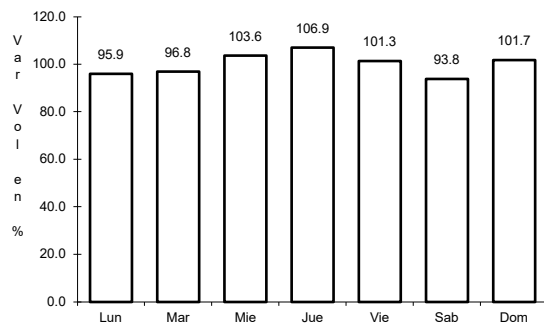
Tipo: 1

Sent: 0

42 CARR: Santo Domingo - Cerro Gordo

CLAVE: 24614

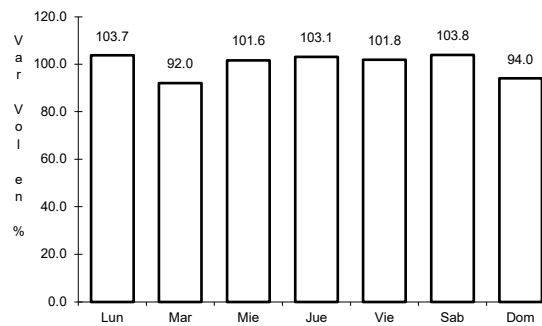
ruta: SLP-022



Km: 0.00

Tipo: 3

Sent: 0



Km: 19.00

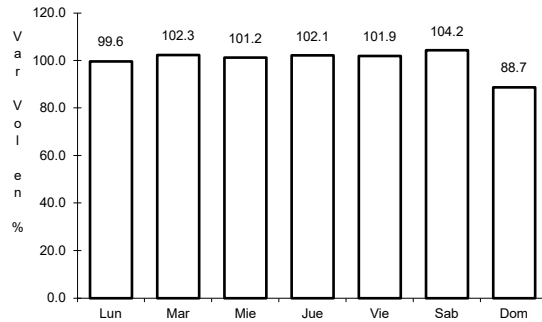
Tipo: 1

Sent: 0

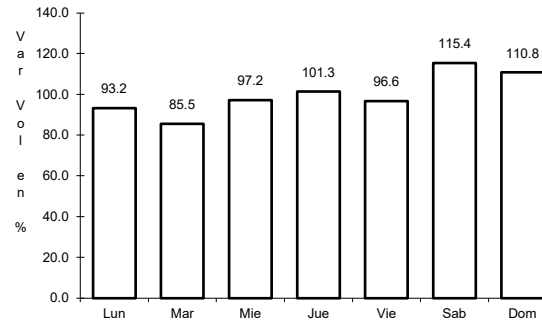
43 CARR: Tamuín - Estación F.F.C.C. Tamuín

CLAVE: 24022

ruta: SLP-040



Km: 0.00      Tipo: 3      Sent: 0

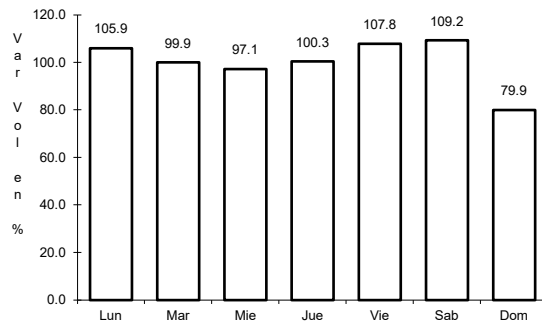


Km: 10.00      Tipo: 1      Sent: 0

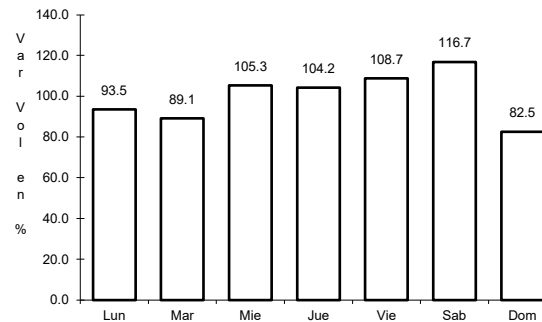
44 CARR: Tamuín - Xolol

CLAVE: 24027

ruta: SLP-014



Km: 0.00      Tipo: 3      Sent: 0

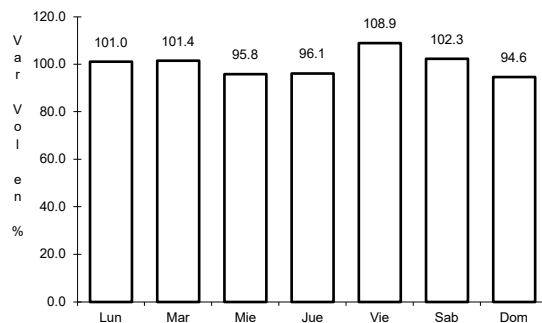


Km: 2.56      Tipo: 3      Sent: 0

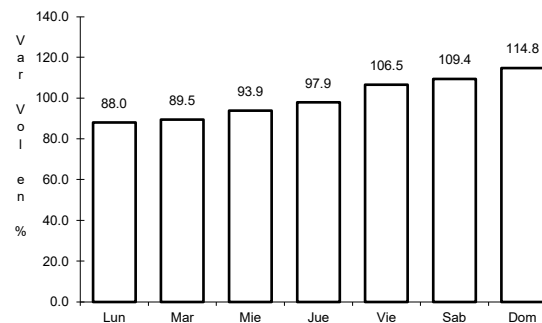
45 CARR: Cerritos - Ent. Tula (Cuota)

CLAVE:

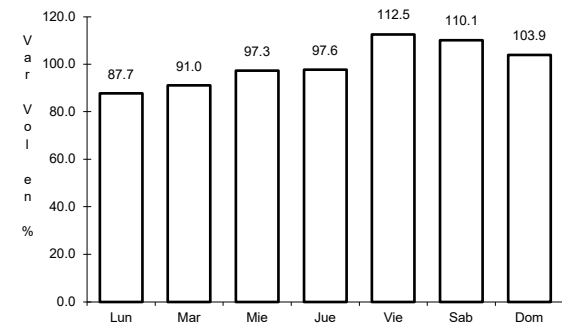
ruta: SLP-075D



Km: 0.00      Tipo: 3      Sent: 0



Km: 18.70      Tipo: 3      Sent: 0

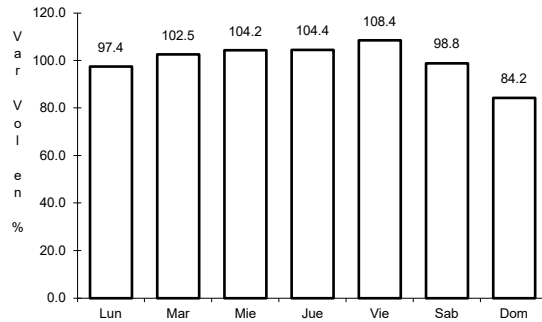


Km: 32.15      Tipo: 3      Sent: 0

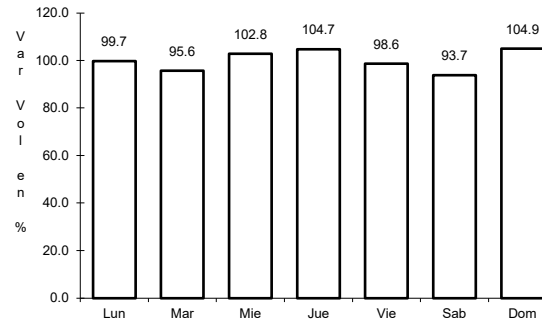
46 CARR: Rioverde - Cerritos (Cuota)

CLAVE: 00138

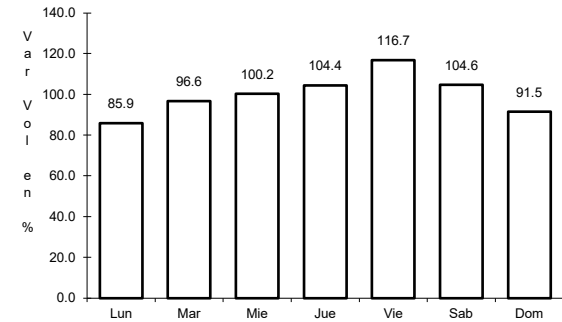
RUTA: SLP-D



Km: 0.00                      Tipo: 3                      Sent: 0



Km: 56.53                      Tipo: 1                      Sent: 0

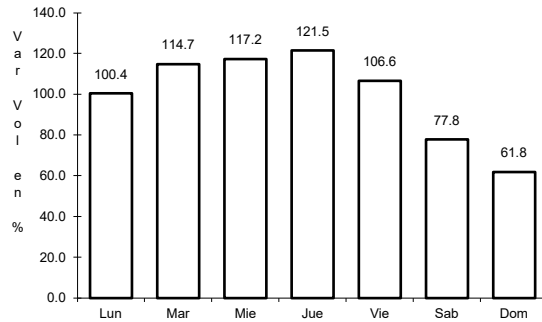


Km: 103.00                      Tipo: 1                      Sent: 0

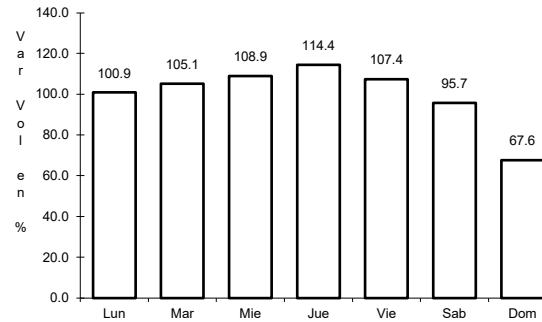
47 CARR: San Luis Potosí - Villa de Arriaga (Cuota)

CLAVE: 24209

RUTA: SLP-D



Km: 0.00                      Tipo: 3                      Sent: 0

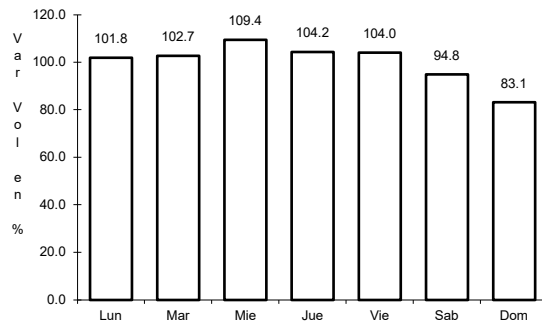


Km: 77.00                      Tipo: 1                      Sent: 0

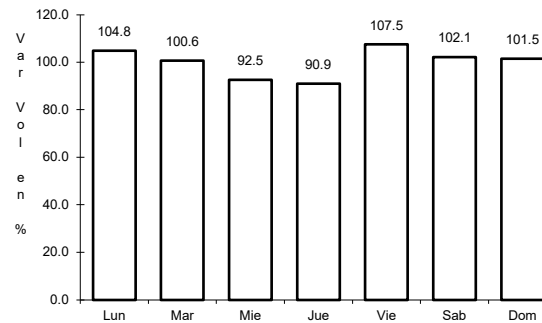
48 CARR: Rayón - Cd. del Maíz

CLAVE: 24206

RUTA: MEX-070-SLP-005



Km: 15.80                      Tipo: 1                      Sent: 0

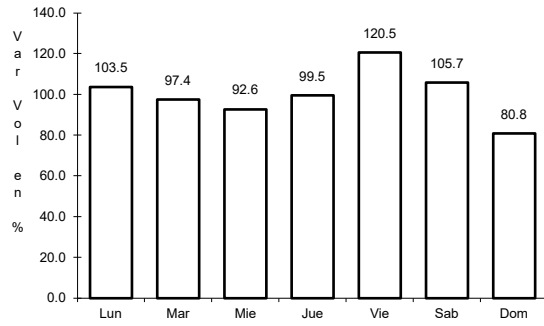


Km: 55.70                      Tipo: 1                      Sent: 0

49 CARR: San Lorenzo - Moctezuma

CLAVE: 24016

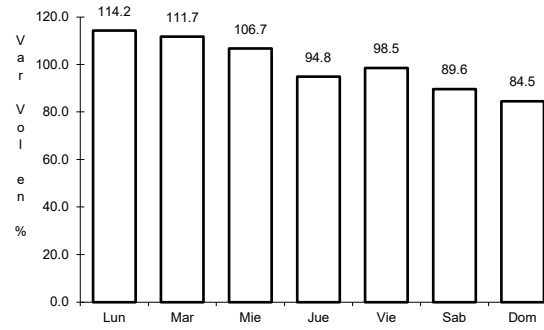
RUTA: MEX-063-SLP-012



Km: 0.00

Tipo: 3

Sent: 0



Km: 54.00

Tipo: 1

Sent: 0

